



BLOODHOUND

TRACKING DEVICE, INC.

The world's first supply chain visibility tool with low-cost, long battery life, 100% communications under any circumstances, track and trace, sniff and identify device.

BLOODHOUND TRACKING DEVICE (BTD)

WHAT IS IT? WHAT DOES IT DO?

THE NEW STANDARD IN TRACK & TRACE TECHNOLOGY

- The BTD is a non-parasitic, non-interfering system; commonly referred to as a “Trailer security device” or “black box.” BTD, at a minimum, provides worldwide, on-demand, precise location and status of your trailer/van and any other trailer/conveyances. BTD uses Cell/Page, GPS and our patented Disruptive Tolerant Mesh Networks to provide world class, 100% communications under any circumstances. **GPS is not enough anymore! BTD has Dual redundant comms!**
- AND..... BTD is a security device/system equipped to detect and report changes in the environment, including temperature, humidity, door open/close with camera, internal noise levels, human presence, and VOC (volatile organic compounds) presence, by using a combination of cutting-edge but proven off-the-shelf sensors, air sniffers, and event triggers.
- Fully configured, the BTD is capable of detection and identification of hazardous chemicals and radiation within the van Power for the BTD is organic/self-contained and requires no scheduled maintenance for 2+ years. The BTD will lease for a very low cost/month in commercial volumes. **NO CAPEX REQUIRED.**

\$15-30 BILLION

The text "\$15-30 BILLION" is rendered in a bold, sans-serif font. The characters are filled with a white-to-gold gradient and have a slight drop shadow. The background of the text is a collage of various shipping containers in colors like red, blue, yellow, and white, arranged in a grid-like pattern.



\$15-30 billion

Lost each year to cargo theft in the US alone

57%

**Increase year over year in
cargo theft**

63

**Cargo thefts on average per
month**

51%

**Of all thefts centered in
California, Texas, and Illinois**

BLOODHOUND TRACKING DEVICE (BTD) WHY DO TRUCKING COMPANIES NEED IT?

1. For years, the level of trailer/van thefts, violent crimes against truckers and box utilization have plagued the largest and medium sized fleets.
2. ELDs and simple GPS units are not the answer! They don't tell the company or the trucker what the status of the van's security really is!! And if it's cloudy, or if there is some problem with "seeing the sky"---YOU NEED MORE!
3. With BTD's Dual-redundant communications suite, BTD never gets out of site of the sky and provides 100% tracking of your vans!
4. With the internal mounting of the units, plus the full sensor suite, a Fleet can mitigate human smuggling, theft, vandalism, contraband and a host of other security information on the VAN, not just the tractor. SECURITY!
5. **Plus, our sales/leasing formula allows for fleets to install units with NO CAP EX, and only a modest monthly lease/monitoring fee.**

Cargo Theft – Security is Woefully Inadequate



- Freight thefts increased by **59%** in the 3Q 2023 over the same period last year across the US and Canada.
- 692 freight thefts occurred, totaling over \$31.1 billion in shipments
- Most are shipment “misdirection attacks.” These strategic cargo theft events increased 430% year-over-year.
- This kind of theft is the result of bad paperwork looking “official”, but with no Track and Trace on the Trailers, (ELD on the cab -- but won't help) the thieves take off with **YOUR GOODS** in an untracked trailer.



Trailer Utilization... We need Accuracy!



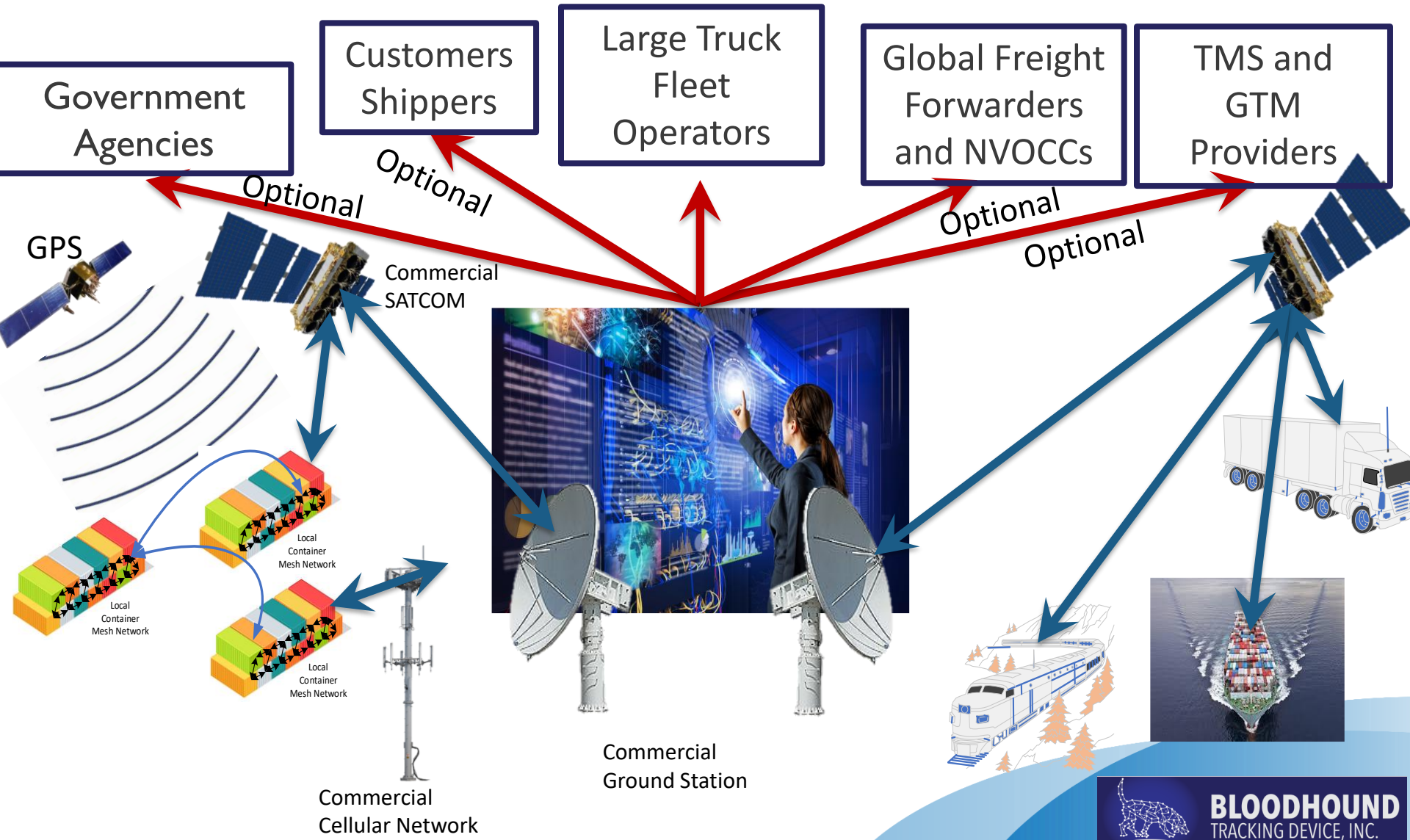
- “Trucking companies don’t realize how badly they underutilize their trailers,” Roy added, noting that lack of visibility is the primary culprit. (Freight Waves, OIG)
- In 2019, only about 24% of the nation’s trailer fleet was equipped with trailer tracking, Roy said, citing American Trucking Associations numbers.
- “At least 20% of their fleet is not being utilized.”
- The Postal Service has approximately 9,500 leased trailers. OIG’s analysis found that during the audit period, 13.9% (1,076 of 7,746) of leased trailers, on average, were not used monthly.



Competing Tracker Specs Matrix

Matrix of Competing Trackers																	
Cargo Tracker Products	Cap Ex	Monthly Fee	Permanently Installed	Installed on Inside or Outside	Battery Life	Tracking Options				Sensors/"Sniffing"		Other Sensors or Alerts				Other Attributes	
						Cell	Sat com	GPS	DTN	Chemical	Human	Light	Sound	Humidity /Temp	Movement or Door Sensor	Easy Install	Secure Package
Bloodhound (BTD)	\$0	\$26	Yes (& mobile)	inside	3-5 Years	√	√	√	√	√	√	√	√	√	√	√	√
Blackberry Radar	\$265	\$10	Yes	outside	5 Years	√	no	no	no	?	?	?	?	√	√	no	no
Arrow Spot	\$289	\$0	Yes	outside	8 Years	√	√	√	no	?	?	no	no	√	√	no	no
hoopoSense Solar	\$150	\$4	?	?	10 Years	√	no	√	no	?	?	?	?	?	√	√	?
Global Trackers CyberSpy TT1	\$79	\$6	No	outside	1 Year (in sleep mode only)	√	no	no	no	?	?	?	?	?	?	no	no
Orbcomm ST-6100	\$705	\$0	Yes	outside	No internal battery	√	√	√	no	no	no	?	?	√	√	no	no
Traxens Box	\$260	\$9	No	outside	4-6 Years	√	no	√	no	no	no	?	?	√	√	no	no
Next4 N402	\$104	\$5.20 - \$8.32	Yes	outside	2 Years	√	no	no	no	no	no	?	?	√	√	no	no
LandAirSea 54	\$99	\$20-\$50	No	outside	Up to 6 Months	√	no	no	no	no	no	no	no	√	no	no	no
Sony Visilion	?	?	?	outside	2 Years	√	no	√	no	no	?	√	no	√	√	√	?
Nexxiot Crossmodal	?	?	?	outside	?	√	?	√	no	?	no	?	?	?	?	√	?

ARCHITECTURE, COMMUNICATIONS AND OPERATIONS



CONTAINER INSTRUMENT UNIT



CAPABILITIES:

- Extremely Low Power (3-5 year, no-service required)
- Ruggedized for Maritime and Tough Trucking Environments
- Van/Trailer Monitoring and Detection
 - Chemical Detection / Identification
 - Geolocation
 - Environmental Condition (Temperature, Pressure, Humidity, Shock and Vibration)
 - Open/Close Detection (Smile, you're on Camera if you open this door!)
 - Container Internal IR & Visible Imagery
 - Life Sign Detection
- Real-Time & Ad-Hoc Global Communication
 - Delay/Disruption Tolerant Networking (DTN)
 - Ad-Hoc Mesh Network, Neighbor Detection / ID
 - Non-Hackable Communications
- Event Trigger & Real-Time Alerting
 - Geofencing
 - Environmental / Sensor Detection

BENEFITS TO TRUCK FLEETS



- Know exactly where your Trailer/ Van is, from stuffing/consolidation to final destination.
- Bloodhound has engaged with Customs (CBP) to review the demo models to consider zero inspections for shippers/importers that use a device like Bloodhound on Northern and Southern Border!
- **A TRUE GREEN LANE? CBP is earnestly considering it with BTD!**
- Exact location, security feed and status updates for trucking firms to have the ability to handle ALL requests for status, location, security integrity, Customs involvement, etc. on the boxes they control because they will have the most accurate and timely details on their phone app! BTD allows a feed for shippers to get direct inquiry access to the data as well.

BENEFITS TO SHIPPERS/BCO's AND TMS/GTM PROVIDERS



1. **Know exactly where your trailers are; anywhere in the world, at any time. Know if your box has been compromised, or is holding hazardous/dangerous goods loaded by others, not the shipper.**
2. **Better route management of your merchandise.** Every BCO using a BTM equipped carrier will know precisely where the box is, and be able to manage re-routes, alternative pickup/drop-off details for accurate supply chain management.
3. **Theft reduction, contraband reduction, and “black-hole dwell time” shall be a thing of the past with the BTM.**
4. **BTM will impact the BCO's ESG rating by providing accurate dwell time and custody transfers.**

BLOODHOUND TRACKING DEVICE: DEVICE INSTALLATION

INSTALLATION

BTD is a 2-pack device;

- Sensors, Coms and Battery Pack (A)
- Outside Com Unit (C) (flat pack, 1-inch thick on roof with small solar array)

INSTALL ONLY OCCURS ON EMPTIES.

- “Unit A” located on inside roof, out of harms way.
- Uses high-strength magnets and a slot box holder for securing units.
- No danger to Installer. No assessment or testing by Installer.
- Totally transferrable to different vans within fleets.

7 Minutes to install.

Auto start, Auto ping to system,
Lights indicate on and ready.

5 Minutes to change out Battery.

Old Battery displays red light--New battery displays green light.

No requirement for any interface except taking the pic of the unit and Trailer #

Installer takes Pic on Phone/App of Trailer number + Unit to initiate unit to ON.

Installer gets “auto pay” when unit goes ON.



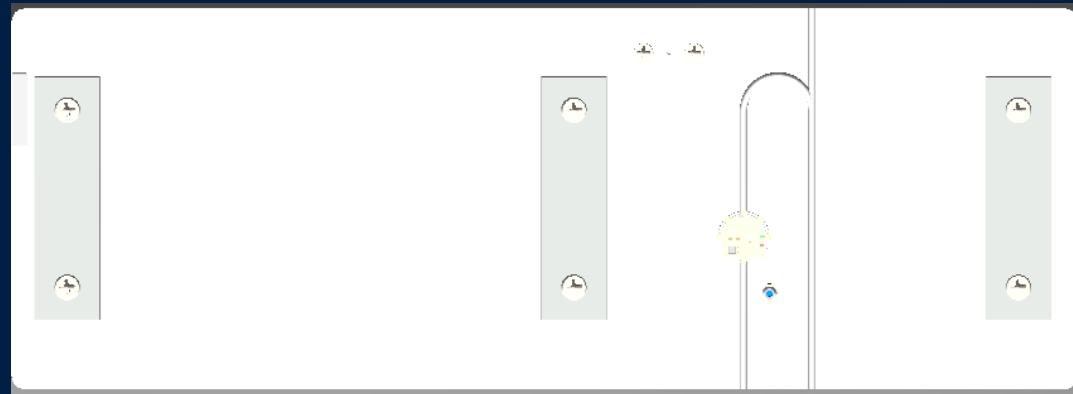
Instrumentation Unit (Inside Trailer)

- Trailer Monitoring and Detection
 - Geolocation
 - Chemical detection & identification
 - Environmental conditions (temperature, pressure, humidity, shock and vibration)
 - Door open/close detection
 - Internal infrared & camera functionality
 - Detection of signs of life

Front View



Back View



BTD Communications Unit

- Low power usage (3-5 year battery life, no service required)
- Manufactured specifically for Harsh Road-worthy Environments – 100% USA parts
- Real-Time & Ad-Hoc Global Communication
 - Disruption Tolerant Networking (DTN)
 - Ad-Hoc Mesh Network, Neighbor Detection/ID
 - LPI/LPD Secured Communications
- Concealed
 - Fits directly into the top of the Trailer Roof.

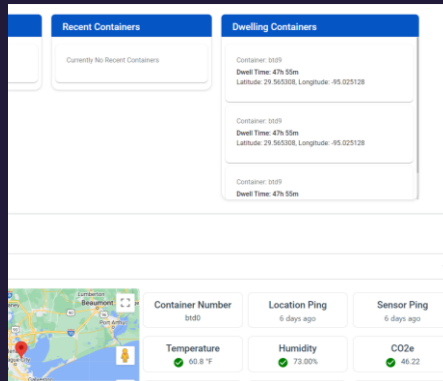


User Interface steps



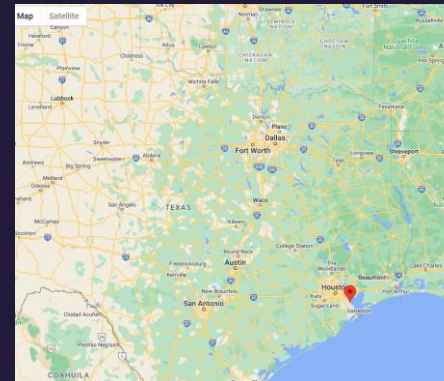
UI Login

Field Trial partners will use their Microsoft account to login to BTD System



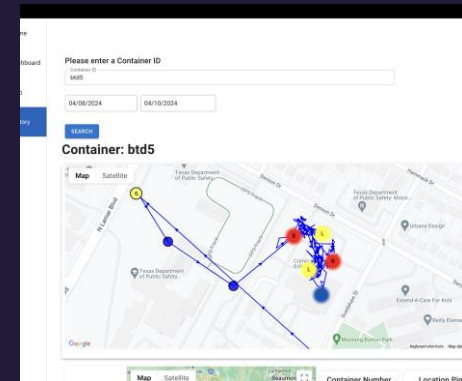
Dashboard View

Field trial partners can monitor events, dwelling and specific containers on the UI



Map View

Field trial partners can monitor their assets on the map located in the UI



History View

Field Trial partners will be able to view previous data gathered on their assets

What Comes Next?

Bloodhound 2.0 --Truck and Chassis Versions:

- Truck Version will have all of the same “sniffing capability” but will also have the ability to **detect human smuggling from within the trailer, (*available now, Q2, 2024)**, notifying the lessee and if requested, law enforcement.
- CBP has requested sniffing of drugs, ammunitions/firearms and currency. Those 2 sensors are under study today.
- **Fentanyl sniffer will be ready in 2025!**
- **Chassis Versions are ready Q4 2024 and include 5-year battery life and no CapEx.**
- **Truck Product Launch October 2024. Demos Available for No Cost (Truck and Chassis Versions....Q4, 2024)**

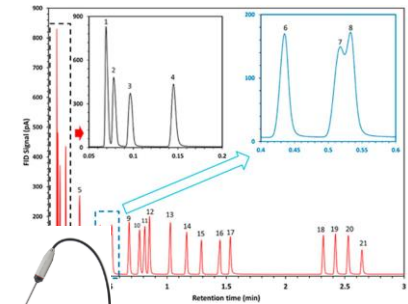
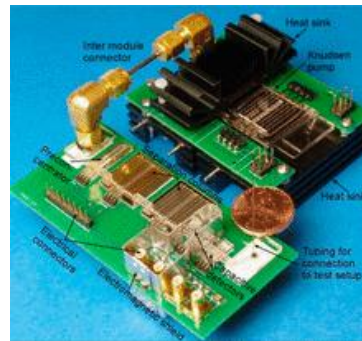


Environmental Trace Chemical Detection Potential for Opioid & Fentanyl Identification En-Route! 2025

OFF-THE SHELF TECHNOLOGIES EXIST REQUIRING ONLY MINIATURIZATION, PACKAGING, AND INTEGRATION INTO THE BTD 2.0

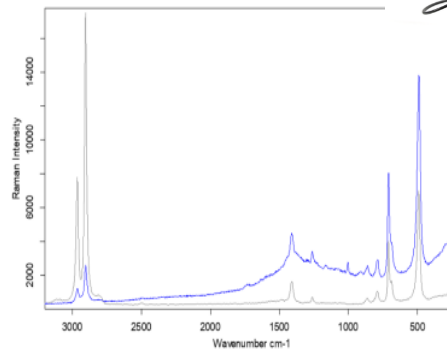
Option 1: Micro Gas Chromatography

- Detects the presence of chemicals against a background “carrier gas” through separation by mass.
- GCs have been reduced to “chip scale” detectors, but the challenge of the inert carrier gas remains.



Option 2: Raman Spectrography

- Raman spectroscopy is a form of vibrational spectroscopy. The technique analyzes a sample chemically, by exciting the sample with laser light to cause molecular vibration and analyzing the resulting vibration.
- Detects the presence of chemicals through their characteristic scattering effects of incident laser light.
- Might be used in BTD by shining a very small laser at the ambient air near door, roof of trailer.



Compound Name	DIMETHICONE
Molecular Formula	(C ₂ H ₄ Si) ₂ n
Molecular Weight	
CAS Registry Number	9016-00-6
Other Names	POLY(DIMETHYLSILOXANE)
Sample Preparation	Raman
Comment	siloxane
Reference	G179/ NDR3433
Copyright	© 2017 Nicodrom
Entry No.	758



BLOODHOUND

TRACKING DEVICE, INC.



farSight
technologies

Questions:

Title: Curtis Spencer, CEO

Email: curtis.spencer@btdtracker.com

Phone: 281-332-1795

Go to www.btdtracker.com for more info!

More technical data of how DTN works is available after NDA