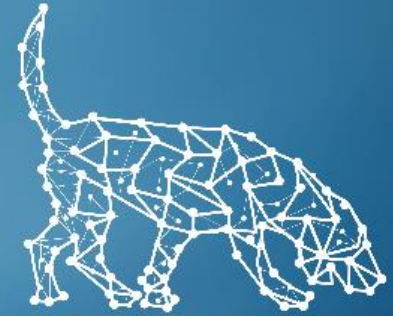




The world's first supply chain  
visibility tool with low-cost, long  
battery life with fully assured  
communications protocols



**BLOODHOUND**  
TRACKING DEVICE, INC.

# BLOODHOUND TRACKING DEVICE

## DISCLAIMER

- This presentation has been prepared by Bloodhound Tracking Device, Inc. (the “Company”) and is general background information the Company’s activities at the date of this presentation. The information in this presentation is provided in summary form only and does not purport to be complete. By attending the presentation or by reading the presentation slides you agree to be bound as follows:
  - This presentation has been made to you solely for information purposes. This presentation may be amended and supplemented as the Company sees fit, may not be relied upon for the purpose of entering into any transaction and should not be construed as, nor be relied on in connection with, any offer or invitation to purchase or subscribe for, underwrite or otherwise acquire, hold or dispose of any securities of the Company, and shall not be regarded as a recommendation in relation to any such transaction whatsoever. The contents of this presentation should not be considered to be legal, tax, investment or other advice, and any investor or prospective investor considering the purchase or disposal of any securities of the Company should consult with its own counsel and advisers as to all legal, tax, regulatory, financial and related matters concerning an investment in or a disposal of such securities and as to their suitability for such investor or prospective investor.
  - This presentation and its contents are confidential and proprietary to the Company, and no part of it or its subject matter may be reproduced, redistributed, passed on, or the contents otherwise divulged, directly or indirectly, to any other person (excluding the relevant person’s professional advisers) or published in whole or in part for any purpose without the prior written consent of the Company. If this presentation has been received in error it must be returned immediately to the Company.
  - The communication of this presentation may be restricted by law; it is not intended for distribution to, or use by any person in, any jurisdiction where such distribution or use would be contrary to local law or regulation. This presentation is not directed to or intended for distribution, or transfer, either directly or indirectly to, or use by, any person or entity that is a citizen or resident or located in any locality, state, country or other jurisdiction where such distribution, transfer, publication, availability or use would be contrary to law or regulation or which would require any registration or licensing within such jurisdiction.
  - This presentation contains forward-looking statements. These statements may include the words “believe”, “expect”, “anticipate”, “intend”, “plan”, “estimate”, “project”, “will”, “may”, “targeting” and similar expressions as well as statements other than statements of historical facts including, without limitation, those regarding the financial position, business strategy, plans, targets and objectives of the management of the Company for future operations (including development plans and objectives). Such forward-looking statements involve known and unknown risks, uncertainties and other important factors which may affect the Company’s ability to implement and achieve the economic and monetary policies, budgetary plans, fiscal guidelines and other development benchmarks set out in such forward-looking statements and which may cause actual results, performance or achievements to be materially different from future results, performance or achievements expressed or implied by such forward-looking statements. Such forward-looking statements are based on numerous assumptions regarding the Company’s present and future policies and plans and the environment in which the Company will operate in the future. Furthermore, certain forward-looking statements are based on assumptions or future events which may not prove to be accurate, and no reliance whatsoever should be placed on any forward-looking statements in this presentation. The forward-looking statements in this presentation speak only as of the date of this presentation, and the Company expressly disclaims to the fullest extent permitted by law any obligation or undertaking to disseminate any updates or revisions to any forward-looking statements contained herein to reflect any change in expectations with regard thereto or any change in events, conditions or circumstances on which any such statements are based. Nothing in the foregoing is intended to or shall exclude any liability for, or remedy in respect of, fraudulent misrepresentation.
  - The information in this presentation has not been independently verified. No representation or warranty, express or implied, is made as to the fairness, accuracy or completeness of the presentation and the information contained herein and no reliance should be placed on it. Information in this presentation (including market data and statistical information) has been obtained from various sources (including third party sources) and the Company does not guarantee the accuracy or completeness of such information. All projections, valuations and statistical analyses are provided for information purposes only. They may be based on subjective assessments and assumptions and they should not be relied upon as an accurate prediction of future performance.
  - All information, opinions and estimates contained herein are given as of the date hereof and are subject to change without notice.

**THE NEW STANDARD IN TRACK & TRACE, AUTOMATED  
IN-TRANSIT VISIBILITY TOOL FOR CHASSIS**



So how does BTD stack up to the competition?



# Competing Tracker Specs Matrix

Matrix of Competing Trackers CHASSIS							
					Tracking Options		
Cargo Tracker Products	Cap Ex	Monthly Fee	Permanently Installed	Battery Life	Cell	GPS	DTN
<b>Bloodhound (BTD)</b>	<b>\$0</b>	<b>\$10</b>	<b>Yes</b>	<b>3-5 Years</b>	√	√	√
Blackberry Radar	\$265	\$10	Yes	5 Years	√	no	no
Arrow Spot	\$289	\$0	Yes	8 Years	√	√	no
hoopoSense Solar	\$150	\$4	?	10 Years	√	√	no
Global Trackers CyberSpy TT1	\$79	\$6	No	1 Year (in sleep mode only)	√	no	no
Orbcomm ST-6100	\$705	\$0	Yes	No internal battery	√	√	no
Traxens Box	\$260	\$9	No	4-6 Years	√	√	no
Next4 N402	\$104	\$5.20 - \$8.32	Yes	2 Years	√	no	no
LandAirSea 54	\$99	\$20-\$50	No	Up to 6 Months	√	no	no
Sony Visilion	?	?	?	2 Years	√	√	no
Nexxiot Crossmodal	?	?	?	?	√	√	no

# Why do I need it for my Chassis Pool?



## Location

**Know exactly where your chassis is, anywhere in The Americas, at any time. You don't have to depend on human input.**

## Cost

**Low in cost, this device allows for ALL of your Chassis to include monitoring for \$10/month, including all CAPEX + Monitoring Services.**

## Revenue

**With accurate location, dwell and usage data for your entire Chassis Fleet, you will increase revenues dramatically. Chassis dwell, and disputes over who took what, when and to where will be dispelled immediately.**

# Why do I need it for my Chassis Pool?



## Accuracy

**Accurate to within a few meters. Always on, pinging multiple times/hour, the Chassis Tracker is designed for complete accuracy. AND...when the unit cannot see the sky (GPS requirement) it will mesh with other Chassis to find the sky and report with Zero down-loss of information.**

## Security

**The Largest Pools report Chassis theft as an epidemic in 2023 and 2024. With the BTD Tracker on the entire Fleet, you can reduce theft and downtime.**

## Utilization

**1. More accurate knowledge of your Chassis, and more utilization will naturally occur. No arguments with truckers or lease-holders. Unit will tell you if you have dwelled longer than 3 or 5 days (you can set the dwell-time!)**

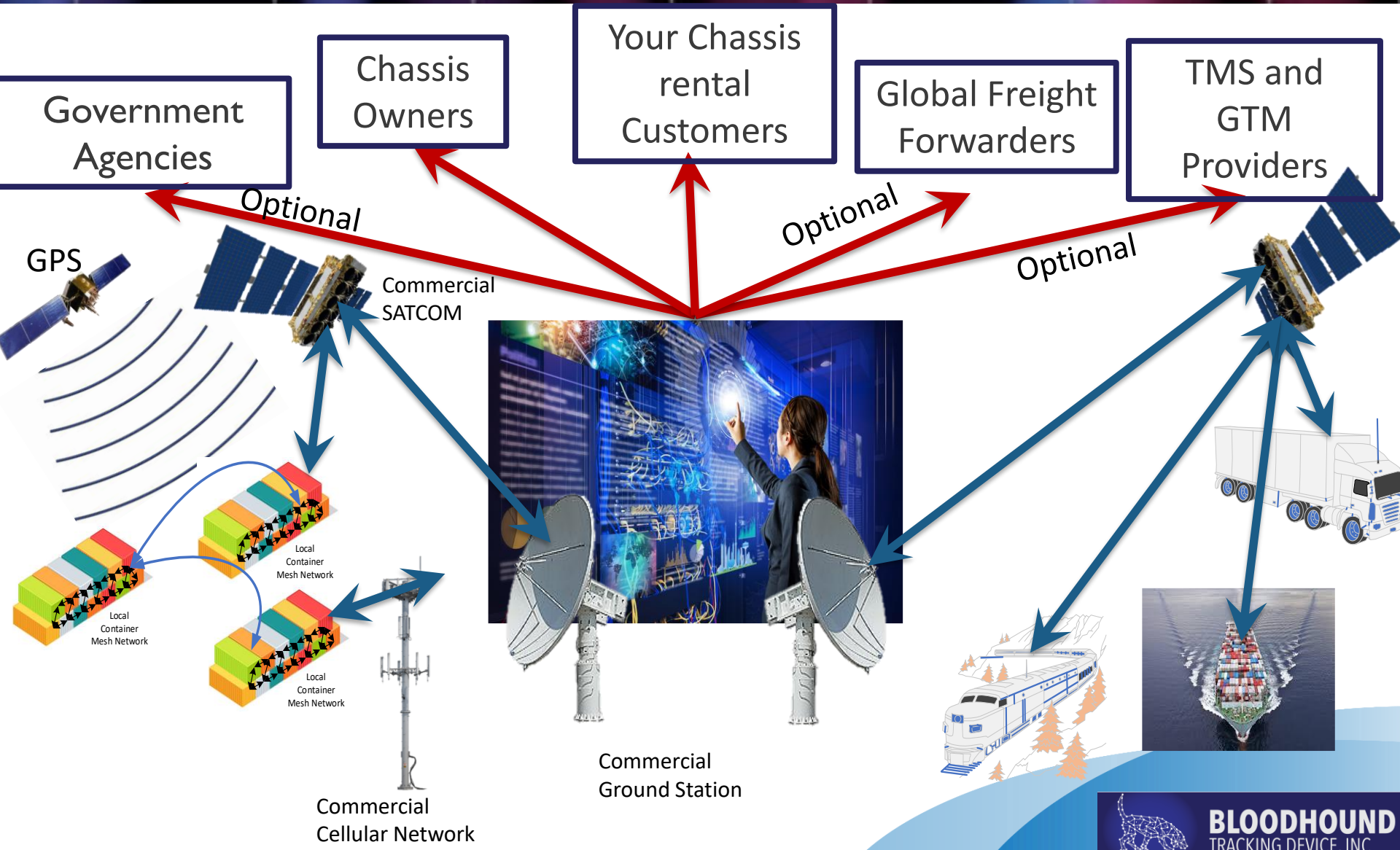
# How does it work?

BTD uses Cell, GPS, and our patented **Disruption Tolerant Mesh Network** to provide world class, assured global communications, anywhere in the world, under any conditions!



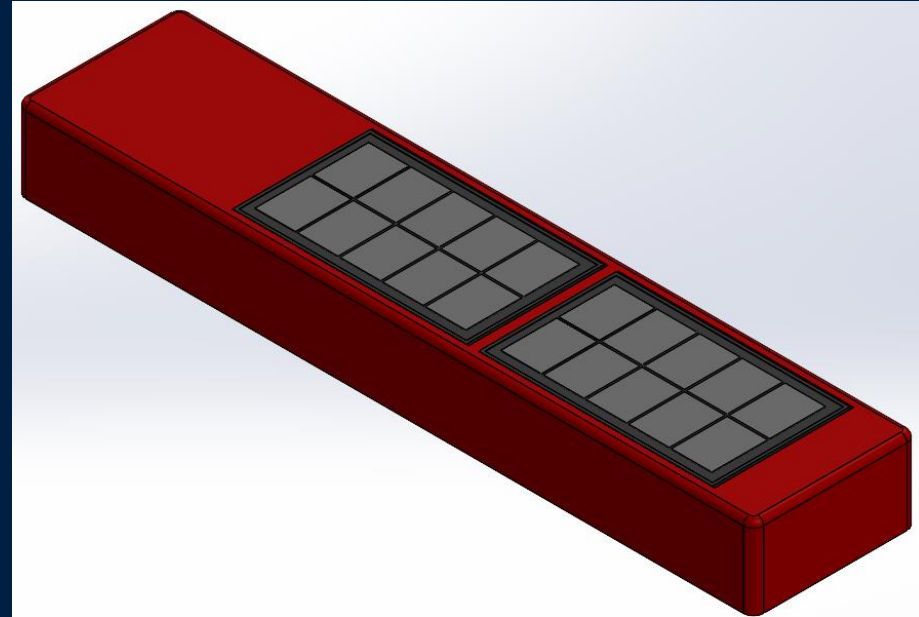


# ARCHITECTURE, COMMUNICATIONS AND OPERATIONS



# BTD Chassis Tracker Unit

- Low power usage (3-5 year battery life, no service required)
- Manufactured specifically for Harsh Road-worthy Environments – 100% USA parts
- Real-Time & Ad-Hoc Global Communication
  - Disruption Tolerant Networking (DTN)
  - Ad-Hoc Mesh Network, Neighbor Detection/ID
  - LPI/LPD Secured Communications
- Concealed
  - Fits directly into the “wall” of the Chassis



# Device Installation

## INSTALLATION IS LESS THAN 5 MINUTES

A (CU) mounted to chassis via high strength magnets- easy on, easy off

- No danger to Installer.
- No assessment or testing by Installer

Less than 5 Minutes to install.

- Auto start, Auto ping to system,
- Lights indicate on and ready.

No requirement for any interface except taking the pic of the unit and chassis

- Installer takes Pic on Phone/App of Chassis number + Unit to “initiate” unit to ON

CU



# User Interface

- Powerful front-end features via configurable UI/UX components
- Notification of any event trigger with time, location, dwell, and removal detection
- Customized reports (Dwell times, Travel history, and Security events)
- Special dwell section with user managed timelines allowed.
- Custom alerts and thresholds for different scenarios that only you have access to

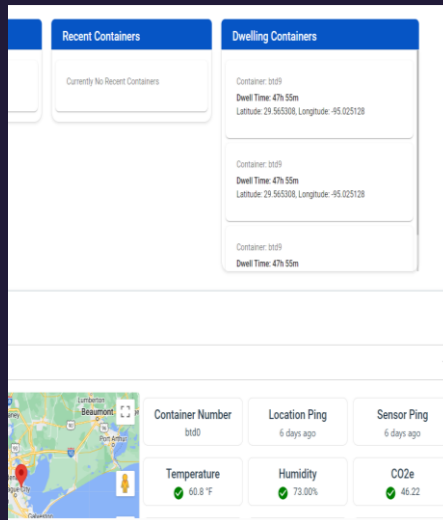


# BTD User Interface



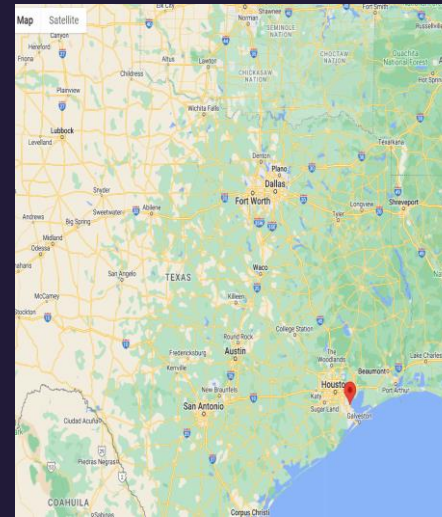
## UI Login

Field Trial partners will use their Microsoft account to login to BTD System



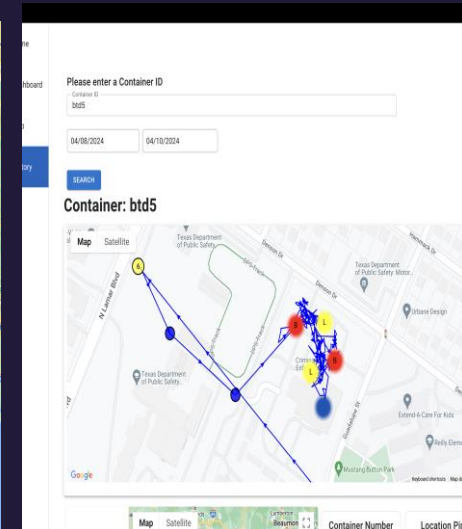
## Dashboard View

Field trial partners can monitor events, dwelling and specific containers on the UI



## Map View

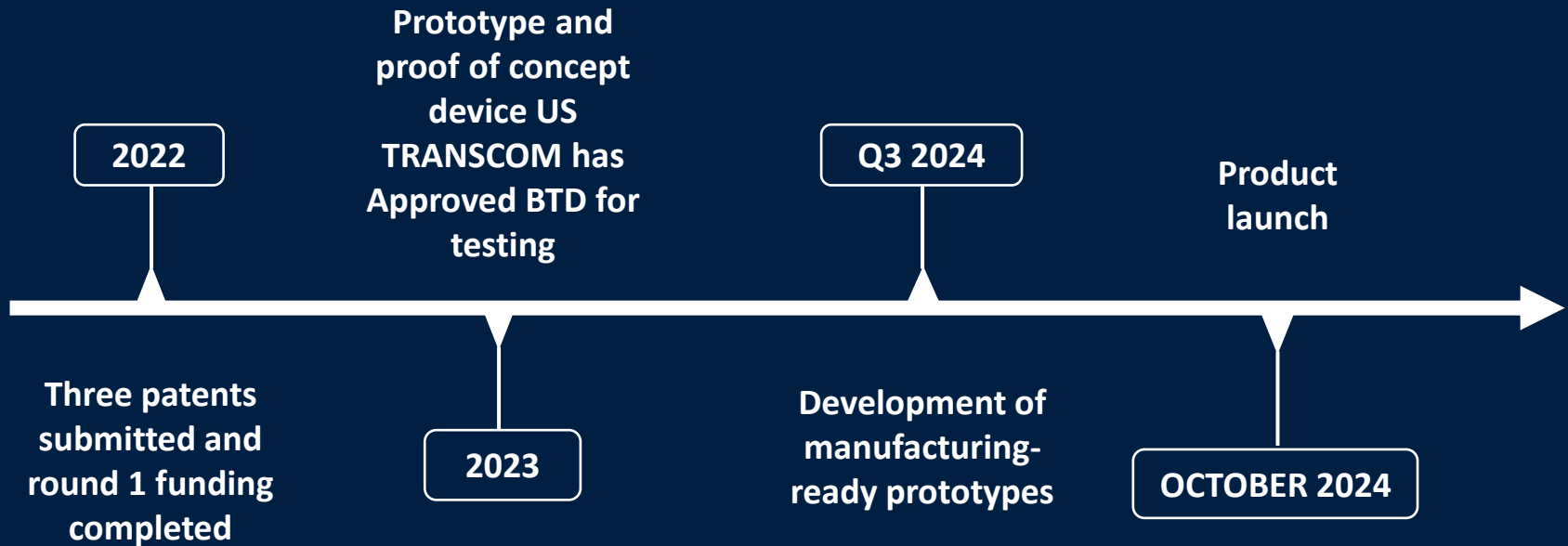
Field trial partners can monitor their assets on the map located in the UI



## History View

Field Trial partners will be able to view previous data gathered on their assets

# Go to Market Plan - Chassis



# ADVANCED FENTANYL / OPIOID DETECTION CAPABILITY

- BTD is in development of an advanced chemical detection / triggering sensor capable of identifying the presence of fentanyl and other dangerous drugs. Expected fentanyl detection capability available in Q3/2025 with other opioids and hazardous chemicals to follow.
- BTD identifies the presence of illegal drugs and other hazardous chemicals by detecting the change in the resonance of precisely tuned electromagnetic structures which are “keyed” to specific chemicals such as fentanyl and other targets. BTD detects only the target chemical without cross-detection of other chemicals, combustion products (CO<sub>2</sub>, CO, NO, etc.) or common airborne pollutants.
- Detection occurs at vapor pressure (natural atmospheric conditions) from the natural off-gassing of chemicals left behind by surface contact or diffusion through sealed packaging. Vapor pressure detection eliminates the need for expensive and complex sensor techniques such as gas chromatography or Raman spectroscopy (the traditional means of detection of complex chemicals) which require vacuum pressures or a neutral carrier gas.
- Detection sensitivity is in the 10s of parts per trillion in normal atmosphere.
- BTD’s sensors are inherently resettable, returning to their non-detection state once the chemical is absent from the ambient air, and do not require consumable reagents or chemically reactive materials.



["Officials with U.S. Customs and Border Protection seized more than 200,000 fentanyl pills hidden in a secret compartment of a vehicle at Port of Nogales, Arizona, Saturday. Around 47,000 of those pills were rainbow-colored pills, which federal officials have warned is a new trend meant to drive young people to the deadly drug. Fentanyl, a powerful opioid up to 50 times stronger than heroin, was responsible for 71,238 of the record 107,000 fatal drug overdoses in the United States last year, according to the CDC." – Fox News, Sep. 6, 2022](#)



Fentanyl pills seized by U.S. Customs and Border Protection officers at the Port of Mariposa in Nogales, Ariz. The pills, along with fentanyl powder, black tar heroin, and methamphetamines were concealed in the spare tire of a vehicle attempting to enter the U.S. from Mexico, Nov. 6, 2023. CBP photo by Jerry Glaser.

# Management Team



Curtis Spencer (CEO) of IMS Worldwide, is a 47-year veteran of Logistics and US Customs consulting. IMSW's largest clients are the Top 100 Importers, Carriers and Railroads. Curtis served on COAC for 4 years after 9/11.



Jason Soloff (CTO) is the Chief Engineer on the project and is an Ex-NASA engineer who helped pioneer space-based communications using DTN and other communications protocols he helped invent for NASA.



Steve Schellenberg (CSCO) is a Top Logistics consultant and supply chain creator with over 50 years experience. Steve's work with CTPAT and Operation Safe Commerce helped shape our Secure Supply Chains.



William Anderson (CGO) is an Ex Special Operator with 45 years of DoD/IC experience. DoD has expressed interest at several layers for the BTD System.



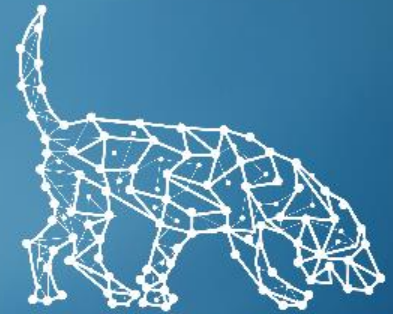
# Contact Us

**Curtis Spencer, CEO**

**Email: [curtis.spencer@btdtracker.com](mailto:curtis.spencer@btdtracker.com)**

**Phone: 281-332-1795**

**Address: 309 Henrietta Street  
Webster, Tx 77598**



**BLOODHOUND**  
TRACKING DEVICE, INC.