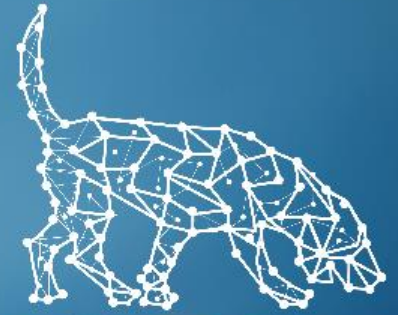




The world's first supply chain
visibility tool with low-cost, long
battery life with full on-board security
and assured global communications.



BLOODHOUND
TRACKING DEVICE, INC.



**THE NEW STANDARD IN TRACK & TRACE, AUTOMATED
IN-TRANSIT VISIBILITY/CONTAINER SECURITY
TECHNOLOGY**

Because GPS is NOT ENOUGH!

BLOODHOUND TRACKING DEVICE

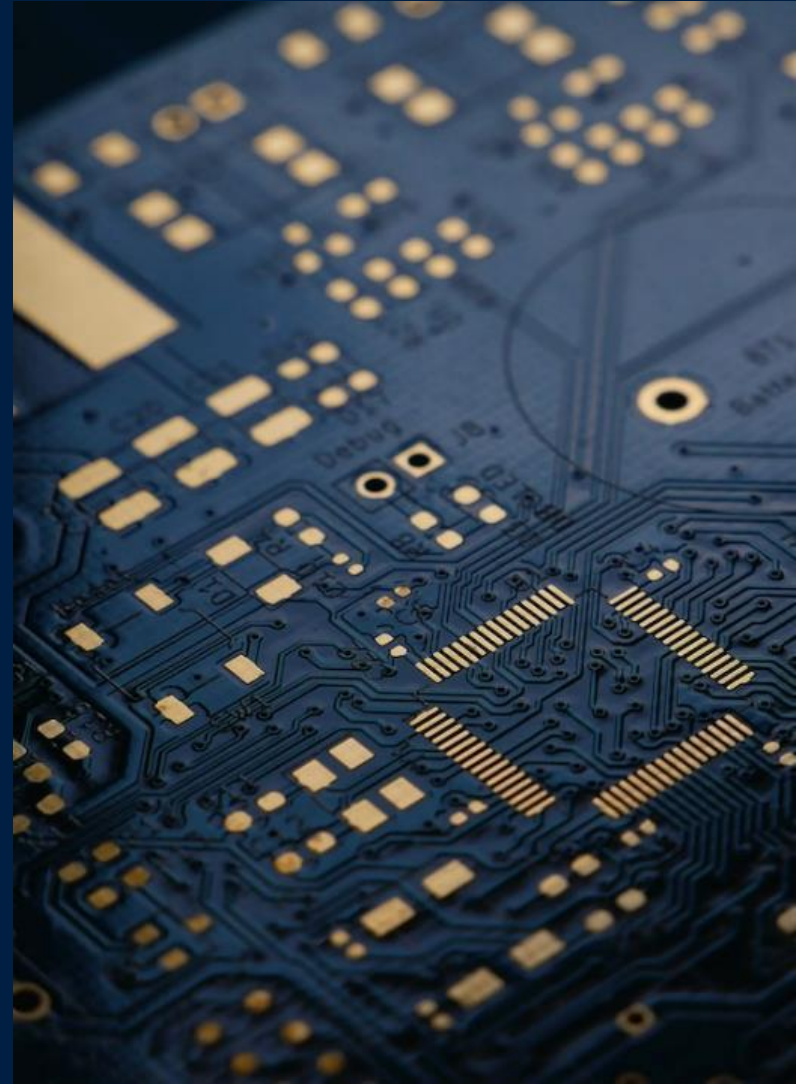
DISCLAIMER

- This presentation has been prepared by Bloodhound Tracking Device, Inc. (the “Company”) and is general background information the Company’s activities at the date of this presentation. The information in this presentation is provided in summary form only and does not purport to be complete. By attending the presentation or by reading the presentation slides you agree to be bound as follows:
 - This presentation has been made to you solely for information purposes. This presentation may be amended and supplemented as the Company sees fit, may not be relied upon for the purpose of entering into any transaction and should not be construed as, nor be relied on in connection with, any offer or invitation to purchase or subscribe for, underwrite or otherwise acquire, hold or dispose of any securities of the Company, and shall not be regarded as a recommendation in relation to any such transaction whatsoever. The contents of this presentation should not be considered to be legal, tax, investment or other advice, and any investor or prospective investor considering the purchase or disposal of any securities of the Company should consult with its own counsel and advisers as to all legal, tax, regulatory, financial and related matters concerning an investment in or a disposal of such securities and as to their suitability for such investor or prospective investor.
 - This presentation and its contents are confidential and proprietary to the Company, and no part of it or its subject matter may be reproduced, redistributed, passed on, or the contents otherwise divulged, directly or indirectly, to any other person (excluding the relevant person’s professional advisers) or published in whole or in part for any purpose without the prior written consent of the Company. If this presentation has been received in error it must be returned immediately to the Company.
 - The communication of this presentation may be restricted by law; it is not intended for distribution to, or use by any person in, any jurisdiction where such distribution or use would be contrary to local law or regulation. This presentation is not directed to or intended for distribution, or transfer, either directly or indirectly to, or use by, any person or entity that is a citizen or resident or located in any locality, state, country or other jurisdiction where such distribution, transfer, publication, availability or use would be contrary to law or regulation or which would require any registration or licensing within such jurisdiction.
 - This presentation contains forward-looking statements. These statements may include the words “believe”, “expect”, “anticipate”, “intend”, “plan”, “estimate”, “project”, “will”, “may”, “targeting” and similar expressions as well as statements other than statements of historical facts including, without limitation, those regarding the financial position, business strategy, plans, targets and objectives of the management of the Company for future operations (including development plans and objectives). Such forward-looking statements involve known and unknown risks, uncertainties and other important factors which may affect the Company’s ability to implement and achieve the economic and monetary policies, budgetary plans, fiscal guidelines and other development benchmarks set out in such forward-looking statements and which may cause actual results, performance or achievements to be materially different from future results, performance or achievements expressed or implied by such forward-looking statements. Such forward-looking statements are based on numerous assumptions regarding the Company’s present and future policies and plans and the environment in which the Company will operate in the future. Furthermore, certain forward-looking statements are based on assumptions or future events which may not prove to be accurate, and no reliance whatsoever should be placed on any forward-looking statements in this presentation. The forward-looking statements in this presentation speak only as of the date of this presentation, and the Company expressly disclaims to the fullest extent permitted by law any obligation or undertaking to disseminate any updates or revisions to any forward-looking statements contained herein to reflect any change in expectations with regard thereto or any change in events, conditions or circumstances on which any such statements are based. Nothing in the foregoing is intended to or shall exclude any liability for, or remedy in respect of, fraudulent misrepresentation.
 - The information in this presentation has not been independently verified. No representation or warranty, express or implied, is made as to the fairness, accuracy or completeness of the presentation and the information contained herein and no reliance should be placed on it. Information in this presentation (including market data and statistical information) has been obtained from various sources (including third party sources) and the Company does not guarantee the accuracy or completeness of such information. All projections, valuations and statistical analyses are provided for information purposes only. They may be based on subjective assessments and assumptions and they should not be relied upon as an accurate prediction of future performance.
 - All information, opinions and estimates contained herein are given as of the date hereof and are subject to change without notice.

So what's the solution?

Bloodhound Tracking Device

A non-parasitic, non-interfering system; commonly referred to as a “container security device” or “black box + software monitoring system.”

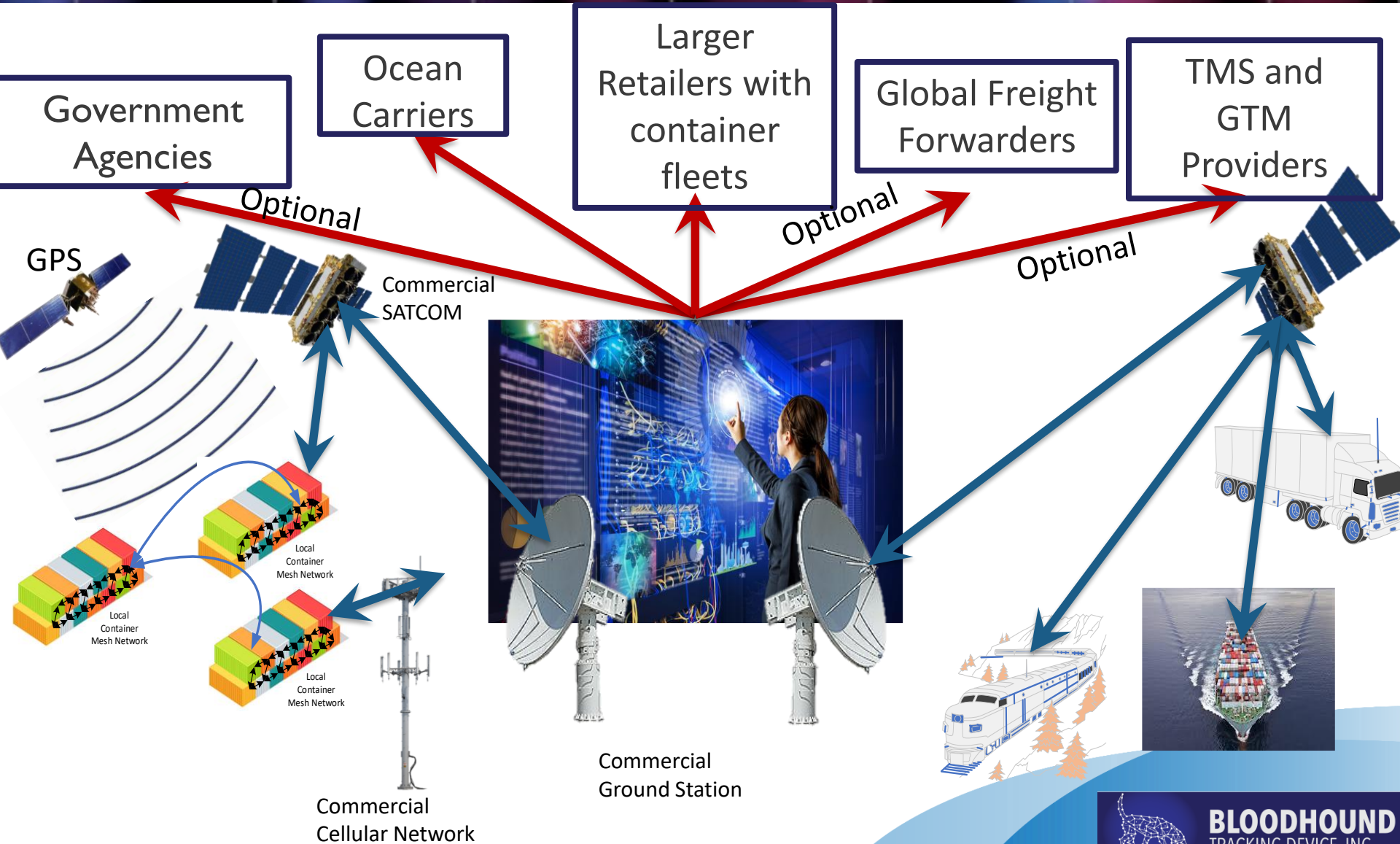


How does it work?

BTD uses Cell, GPS, Satellite, and our patented **Disruption Tolerant Mesh Network** to provide world class, assured global communications, anywhere in the world, under any conditions!



ARCHITECTURE, COMMUNICATIONS AND OPERATIONS



Why do I need it?

Location

Know exactly where your boxes are, anywhere in the world, at any time. You don't have to depend on human input.

Cost

Zero Cap Ex, low monthly cost (\$20 a month at commercial volumes), and long battery life

Revenue

Management can increase carrier revenues by up to 18% with super-accurate location analysis. BTD also monitors Dwell!



Why do I need it?

MTDI

The Federal Maritime Commission (FMC) is pushing the Maritime Transportation Data Initiative (MTDI) as a method to get the BCO more transparency and access to location and status of their box. Therefore, tracking in some capacity will likely soon be a REQUIREMENT. **BTD SOLVES THIS!**

Security

Always know WHO and WHAT is in your box. Get access to location, location, camera footage, chemical detection, and so on. Automatically Automatically Detect breaches in security the minute they happen! happen!

Utilization

The advanced tracking capabilities offered by BTD BTD enables the carrier to achieve ***one additional additional full turn per year*** .



So how does BTD stack up to the competition?



Competing Tracker Specs Matrix

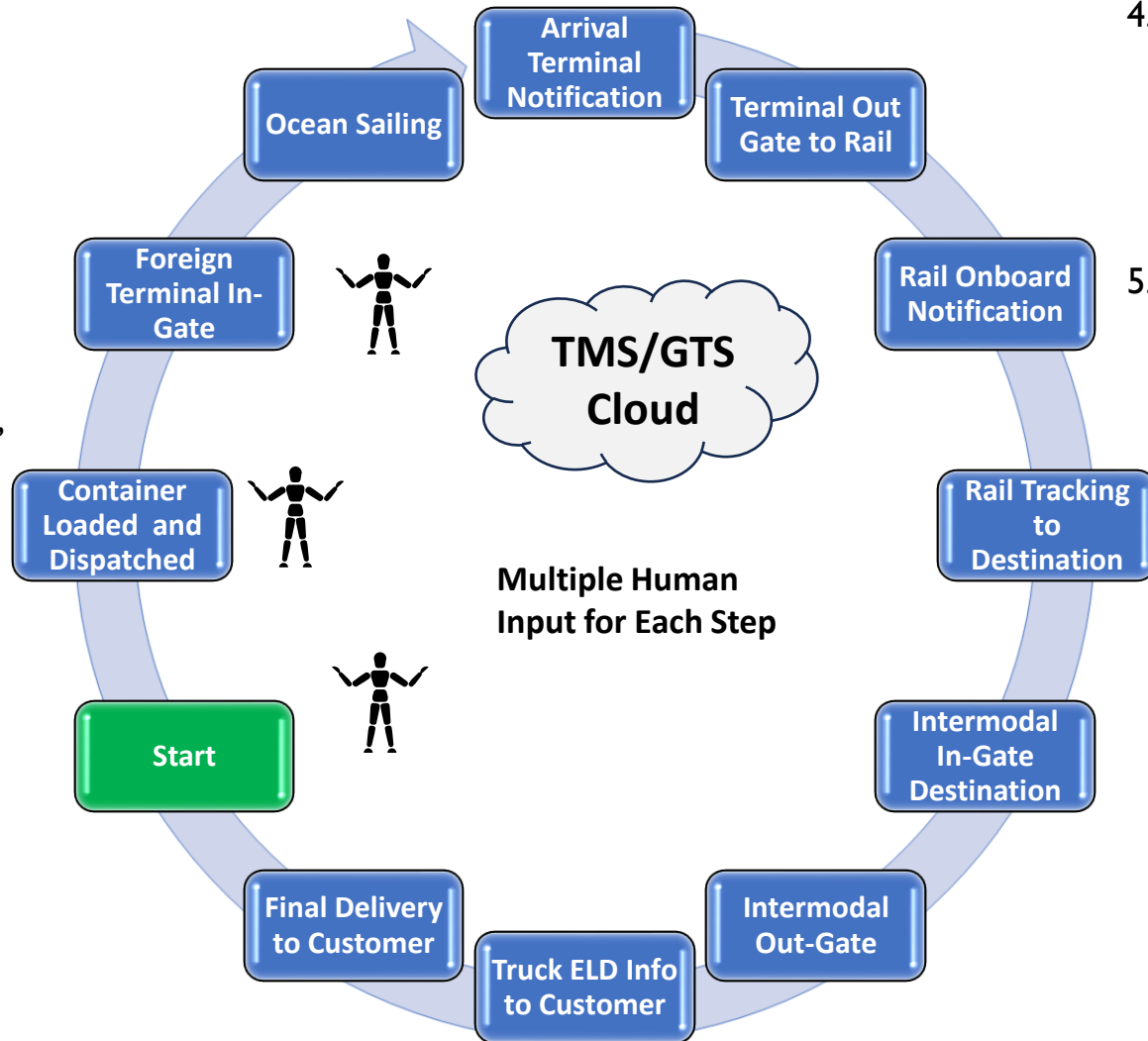
Matrix of Competing Trackers																	
Cargo Tracker Products	Cap Ex	Monthly Fee	Permanently Installed	Installed on Inside or Outside	Battery Life	Tracking Options				Sensors/"Sniffing"		Other Sensors or Alerts				Other Attributes	
						Cell	Sat com	GPS	DTN	Chemical	Human	Light	Sound	Humidity /Temp	Movement or Door Sensor	Easy Install	Secure Package
Bloodhound (BTD)	\$0	\$26	Yes (& mobile)	inside	3-5 Years	√	√	√	√	√	√	√	√	√	√	√	√
Blackberry Radar	\$265	\$10	Yes	outside	5 Years	√	no	no	no	?	?	?	?	√	√	no	no
Arrow Spot	\$289	\$0	Yes	outside	8 Years	√	√	√	no	?	?	no	no	√	√	no	no
hoopoSense Solar	\$150	\$4	?	?	10 Years	√	no	√	no	?	?	?	?	?	√	√	?
Global Trackers CyberSpy TT1	\$79	\$6	No	outside	1 Year (in sleep mode only)	√	no	no	no	?	?	?	?	?	?	no	no
Orbcomm ST-6100	\$705	\$0	Yes	outside	No internal battery	√	√	√	no	no	no	?	?	√	√	no	no
Traxens Box	\$260	\$9	No	outside	4-6 Years	√	no	√	no	no	no	?	?	√	√	no	no
Next4 N402	\$104	\$5.20 - \$8.32	Yes	outside	2 Years	√	no	no	no	no	no	?	?	√	√	no	no
LandAirSea 54	\$99	\$20-\$50	No	outside	Up to 6 Months	√	no	no	no	no	no	no	no	√	no	no	no
Sony VISION	?	?	?	outside	2 Years	√	no	√	no	no	?	√	no	√	√	√	?
Nexxiot Crossmodal	?	?	?	outside	?	√	?	√	no	?	no	?	?	?	?	√	?



CURRENT TMS/GTMS SYSTEM FOR TRACK AND TRACE AND TRACE

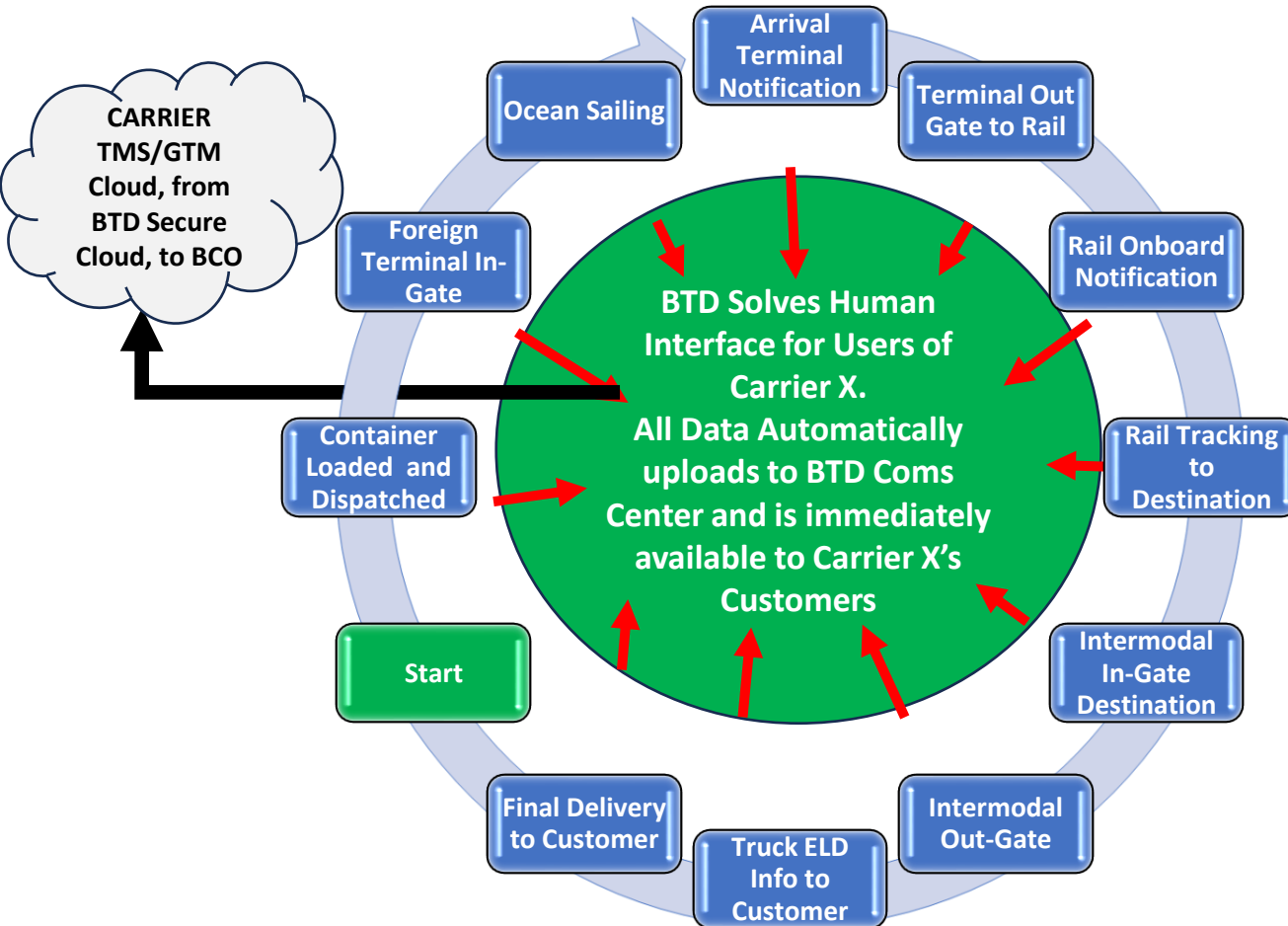
CURRENT PROBLEMS:

1. The “input” for all track and trace (T&T) systems today relies on human input, scouring the internet for “clues” as to the whereabouts and other methods (bots, etc.)
2. This process is error prone, leaves YOUR CARGO location and “health status” to unknown people.
3. On many of the nodes in the Global Supply Chain, there are multiple inputs on multiple days for the same deliver!



4. Some steps are missed altogether, especially in foreign countries and the chain of custody is marred.
5. By removing the human input, using the BTM Device that sits inside the container and has patented communications protocols to get that information OUT, the Logistics Executive will know exactly where the box is, what the status is of the cargo inside, creating Actionable Intel for the user.

TMS/GTM SYSTEM WITH THE BTD SYSTEM SOLUTION



- NO human input at all.
- Real Time status updates.
- Useable all over the world.
- Exact status updates.
- Actionable Intel available 24/7 on each box.
- Event notification direct to the user's hand-held phone or pad.

BENEFITS TO OCEAN CARRIERS

1. **Know exactly where your boxes are, both full and empty.**
2. **Much higher box utilization** when the carrier knows exactly where the box is and is able to use it for more turns. BTD can achieve another full turn per year which is easily quantified by the carrier.
3. **IMSW has engaged with Customs (CBP) to review the demo models to consider zero inspections for shippers/importers that use a device like Bloodhound.**
4. **“Empty” Management can increase Carrier Revenues by up to 18% (from a CEO of a major carrier)**
5. **NO CAPEX—Low \$26/month/unit lease (5 yrs)***

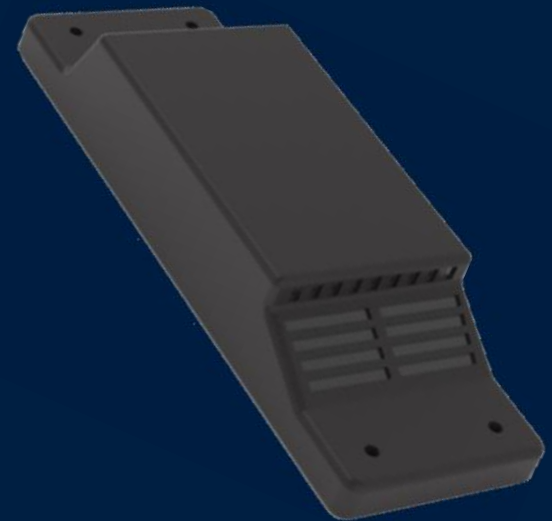
*at commercial volumes

BENEFITS TO SHIPPERS/BCOs AND TMS/GTM PROVIDERS

1. **Know exactly where your boxes are; anywhere in the world, at any time. Know if your box has been compromised or is holding hazardous/dangerous goods loaded by others, not the shipper.**
2. **Better route management of your merchandise.** Every BCO using a BTM equipped carrier will know precisely where the box is, and be able to manage re-routes, alternative pickup/drop-off details for accurate supply chain management.
3. **Theft reduction, contraband reduction, and “black-hole dwell time” shall be a thing of the past with the BTM.**
4. **BTM will impact the BCO’s ESG rating by providing accurate dwell time and custody transfers.**

Communication Unit (Outside Container)

- Low power usage (2 year battery life, no service required)
- Manufactured specifically for Maritime Environments – 100% USA parts
- Real-Time & Ad-Hoc Global Communication
 - Disruption Tolerant Networking (DTN)
 - Ad-Hoc Mesh Network, Neighbor Detection/ID
 - LPI/LPD Secured Communications
- Event Trigger & Near Real-Time Alerting
 - All sensors inside container communicate with external comms unit
- Concealed
 - Exact same footprint as a standard ocean container vent
 - Unidentifiable by an expert from a distance of 5 feet



Instrumentation Unit (Inside Container)

- Container Monitoring and Detection
 - Geolocation
 - Chemical detection & identification
 - Environmental conditions (temperature, pressure, humidity, shock and vibration)
 - Door open/close detection
 - Internal infrared & camera functionality
 - Detection of signs of life



Device Installation

INSTALL ONLY OCCURS ON EMPTIES

- A (IU) & B (CU) mounted to container via high strength magnets- easy on, easy off
- No danger to Installer.
- No assessment or testing by Installer

10 Minutes to install

- Auto start, Auto ping to system,
- Lights indicate on and ready.

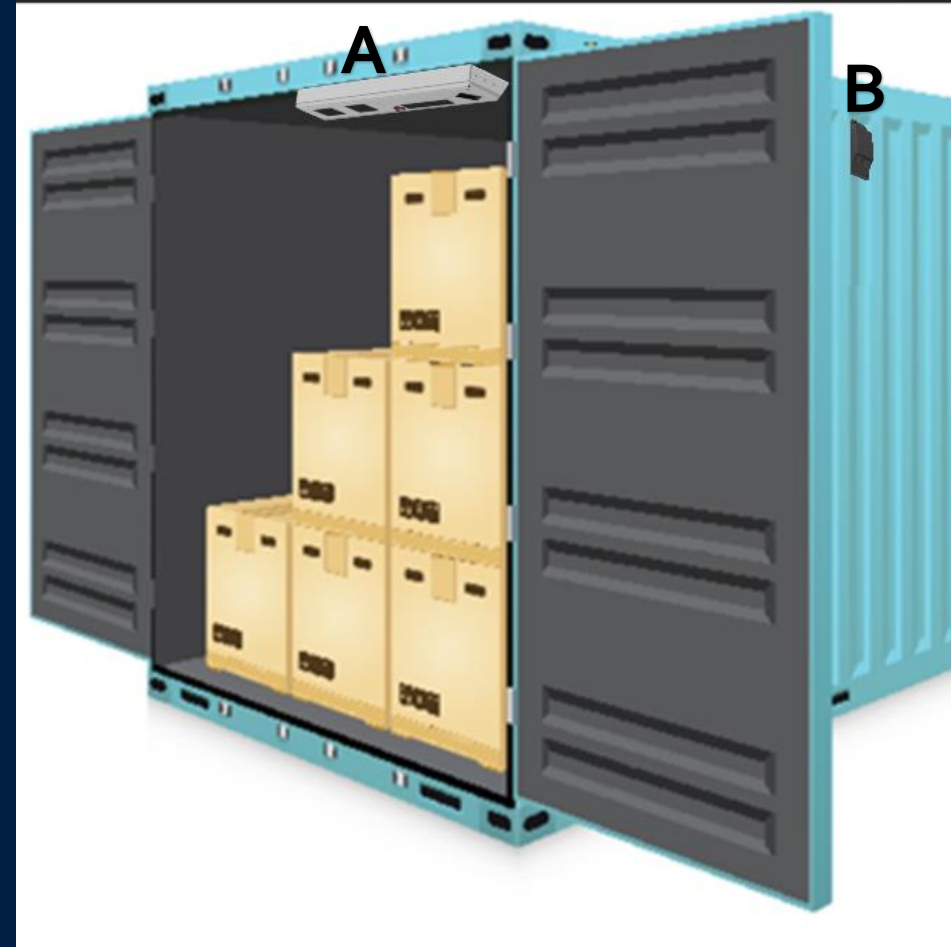
5 Minutes to change out Battery

- Old Battery displays **red light**
- New battery displays **green light.**

No requirement for any interface except taking the pic of the unit and container

Installer takes Pic on Phone/App of Container number + Unit to "initiate" unit to ON

Installer gets "auto pay" when unit goes ON



User Interface

- Powerful front-end features via configurable UI/UX components
- Notification of any event trigger with time, location, and sensor event
- Customized reports (Dwell times, Travel history, and Security events)
- Multiple container tracking, reporting, and search capabilities
- Plug and Play security features that ensure your containers cargo is safe and secure
- Custom alerts and thresholds for different scenarios that only you have access to



ADVANCED FENTANYL / OPIOID DETECTION CAPABILITY

- BTD is in development of an advanced chemical detection / triggering sensor capable of identifying the presence of fentanyl and other dangerous drugs. Expected fentanyl detection capability available in Q3/2025 with other opioids and hazardous chemicals to follow.
- BTD identifies the presence of illegal drugs and other hazardous chemicals by detecting the change in the resonance of precisely tuned electromagnetic structures which are “keyed” to specific chemicals such as fentanyl and other targets. BTD detects only the target chemical without cross-detection of other chemicals, combustion products (CO₂, CO, NO, etc.) or common airborne pollutants.
- Detection occurs at vapor pressure (natural atmospheric conditions) from the natural off-gassing of chemicals left behind by surface contact or diffusion through sealed packaging. Vapor pressure detection eliminates the need for expensive and complex sensor techniques such as gas chromatography or Raman spectroscopy (the traditional means of detection of complex chemicals) which require vacuum pressures or a neutral carrier gas.
- Detection sensitivity is in the 10s of parts per trillion in normal atmosphere.
- BTD’s sensors are inherently resettable, returning to their non-detection state once the chemical is absent from the ambient air, and do not require consumable reagents or chemically reactive materials.

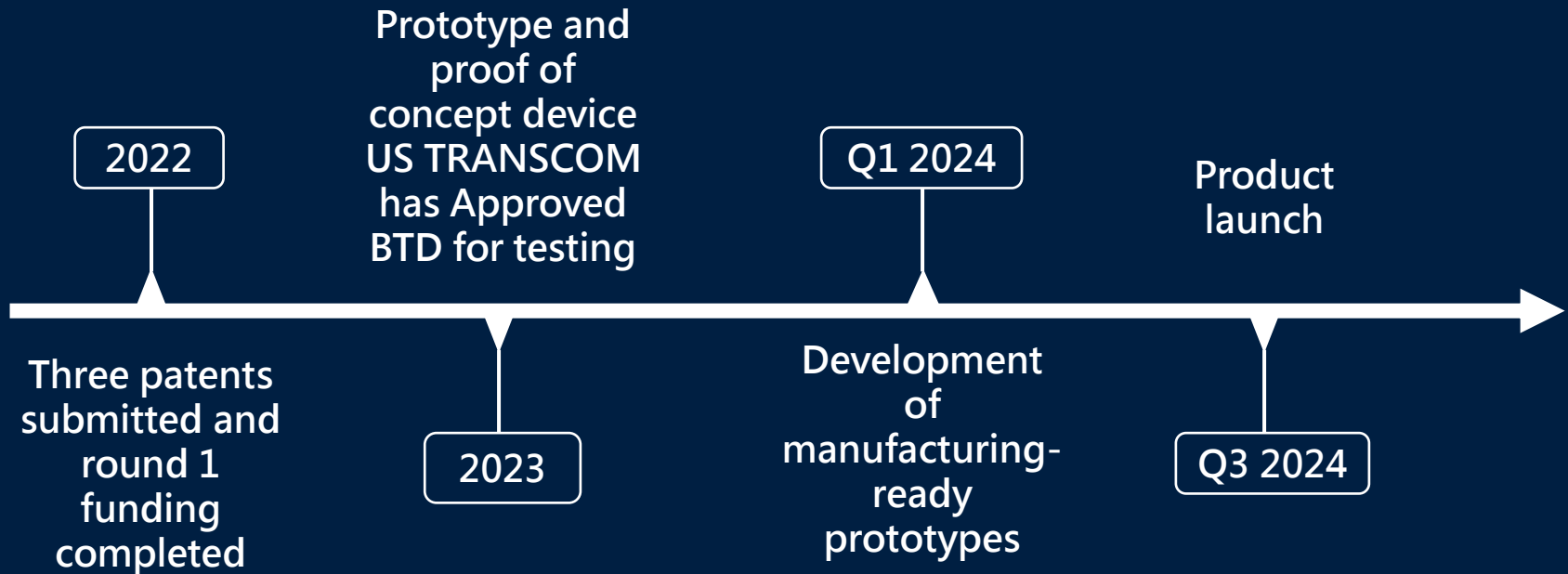


["Officials with U.S. Customs and Border Protection](#) seized more than 200,000 fentanyl pills hidden in a secret compartment of a vehicle at Port of Nogales, Arizona, Saturday. Around 47,000 of those pills were rainbow-colored pills, which federal officials have warned is a new trend meant to drive young people to the deadly drug. Fentanyl, a powerful opioid up to 50 times stronger than heroin, was responsible for 71,238 of the record 107,000 fatal drug overdoses in the United States last year, according to the CDC." – Fox News, Sep. 6, 2022



Fentanyl pills seized by U.S. Customs and Border Protection officers at the Port of Mariposa in Nogales, Ariz. The pills, along with fentanyl powder, black tar heroin, and methamphetamines were concealed in the spare tire of a vehicle attempting to enter the U.S. from Mexico, Nov. 6, 2023. CBP photo by Jerry Glaser.

Go to Market Plan



Management Team



Curtis Spencer (CEO) of IMS Worldwide, is a 47-year veteran of Logistics and US Customs consulting. IMSW's largest clients are the Top 100 Importers, Carriers and Railroads. Curtis served on COAC for 4 years after 9/11.



Jason Soloff (CTO) is the Chief Engineer on the project and is an Ex-NASA engineer who helped pioneer space-based communications using DTN and other communications protocols he helped invent for NASA.



Steve Schellenberg (CSCO) is a Top Logistics consultant and supply chain creator with over 50 years experience. Steve's work with CTPAT and Operation Safe Commerce helped shape our Secure Supply Chains.



William Anderson (CGO) is an Ex Special Operator with 45 years of DoD/IC experience. DoD has expressed interest at several layers for the BTB System.

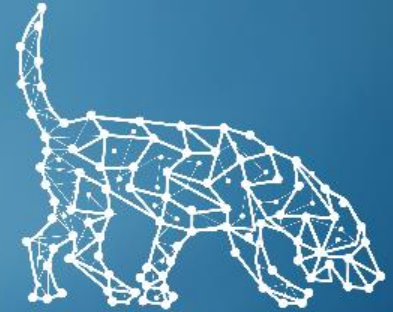
Contact Us

Curtis Spencer, CEO

Email: curtis.spencer@btdtracker.com

Phone: 281-332-1795

Address: 309 Henrietta Street
Webster, Tx 77598



BLOODHOUND
TRACKING DEVICE, INC.