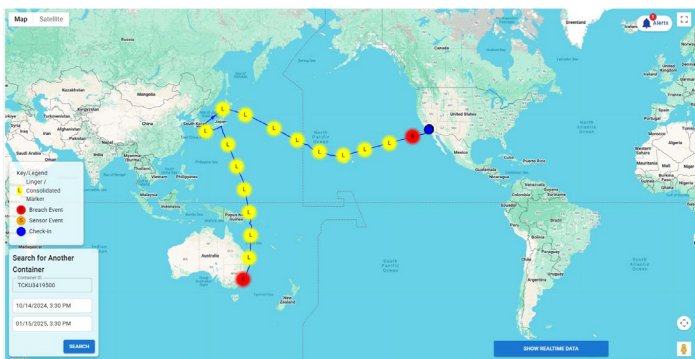




BLOODHOUND TRACKING DEVICE, INC.

In today's global trade environment, real-time security and visibility are no longer optional; they're essential. Shippers and logistics providers rely on a wide range of tools to ensure cargo arrives safely, securely, and on schedule. The Bloodhound Tracking Device provides supply chain security and optimization through:



Land and Ocean Tracking Example

- **Internal sensors** include CO₂ and ammonia (to detect and report human smuggling) light, shock, temp, humidity, and battery to document the internal condition of the cargo.
- **Photo captures** occur in three bursts when the door is opened-authorized or unauthorized. Photos are presented in real time and stored in a secure archive file for forensic documentation.
- **Event alarms** triggered by internal sensors, always present both time and location notice to the users or other stakeholders, giving immediate actionable information to thwart or deter loss, damage or theft of cargo.

The most effective path forward for trucking companies, rail and ocean carriers, and logistics service providers is full deployment of smart tracking devices across their networks. The **Bloodhound Tracking Device** delivers unmatched cargo and conveyance integrity giving cargo owners peace of mind with real-time visibility and protection. Anything less leaves your assets vulnerable to theft, loss, or damage. Shippers should prioritize carriers who commit to full-network security and visibility.

The New Standard in Supply Chain Security and Optimization

Covert Security device that is not visible from outside the container or trailer

Monthly lease for the tracking services, no Capex

Maintenance, replacement battery and customer/technical service included in the lease rate

Redundant communications provide global visibility and proof of security

Long-Lasting Power: Designed to operate for 3+ years

Sensors can be preset to support customers requirements

To Learn More Visit www.BTDtracker.com or Call: 281-332-1795
(curtis.spencer@btdtracker.com and steve.schellenberg@btd tracker.com)

THE BLOODHOUND TRACKING DEVICE

The Smart Container System is Available Today

GPS, Cellular system, SATCOM,
LoRa Network and Disruptive
Tolerant Network for
Communications

First Global End to End Visibility
and Security Service

Single source for all major
milestone visibility in the global
supply chain

BTD offers real-time visibility
into dwell times and asset
utilization, empowering smarter
operational decisions and
improved efficiency.

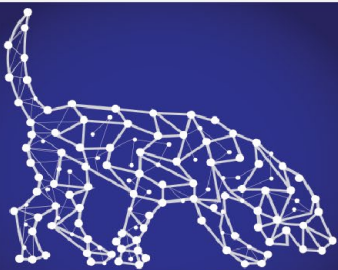
Shippers and BCOs must drive
the carriers to fully implement
security and tracking devices

Shippers and BCOs will start to
shift cargo volumes to carriers
who provide visibility and
security as a service



1. **Rugged & Weatherproof:** IP67-rated for dust, water, impact, engineered to perform in the harshest field conditions.
2. **Global LTE-M Connectivity:** Reliable, seamless coverage across large geographic areas.
3. **Intelligent Tracking Modes:** Flexible, adaptive tracking profiles tailored to match your specific operations.
4. **Event Monitoring:** Real-time alerts when ensuring full visibility and security.
5. **Wide Operating Range:** Performs reliably from **-20°C to +60°C**, making it ideal for year-round use in all climates.
6. **Advanced Shock Detection:** Monitors and detects impact events up to **±16G**, helping identify mishandling or collisions in transit.
7. **Power Monitoring:** Tracks energy usage based on actual device activity for precise performance insights.

To Learn More Visit: www.BTDtracker.com
or call 281-332-1795



BLOODHOUND

TRACKING DEVICE, INC.