

BLOODHOUND
TRACKING DEVICE, INC.

Revolutionizing Supply Chain Security, Visibility and On-Site Monitoring

Bloodhound is a cutting-edge solution designed to provide unparalleled security and real-time visibility across your entire supply chain, ensuring integrity and efficiency from origin to destination. When units are deployed, Bloodhound keeps on working to protect these vital, expensive assets!

Explore more about Bloodhound:

- [Visit Our Website](#)
- [Connect on LinkedIn](#)



1

Who we are

Founded by supply-chain security and space-comms veterans with 100+ years of combined experience, on a mission to eliminate cargo theft and optimize asset utilization

2

Bloodhound System

An integrated hardware + software solution with a secure cloud backend delivering end-to-end supply-chain security and pinpoint locational intelligence, complete with tamper-proof cargo integrity verification

3

Visibility as a Service (VaaS)

Industry-leading resilience, sustainability, security, and end-to-end transparency for logistics, shipping, and transportation; all on a low-cost subscription model with NO CAPEX

What Problems do BESS and MDC face today?

In-Transit Theft

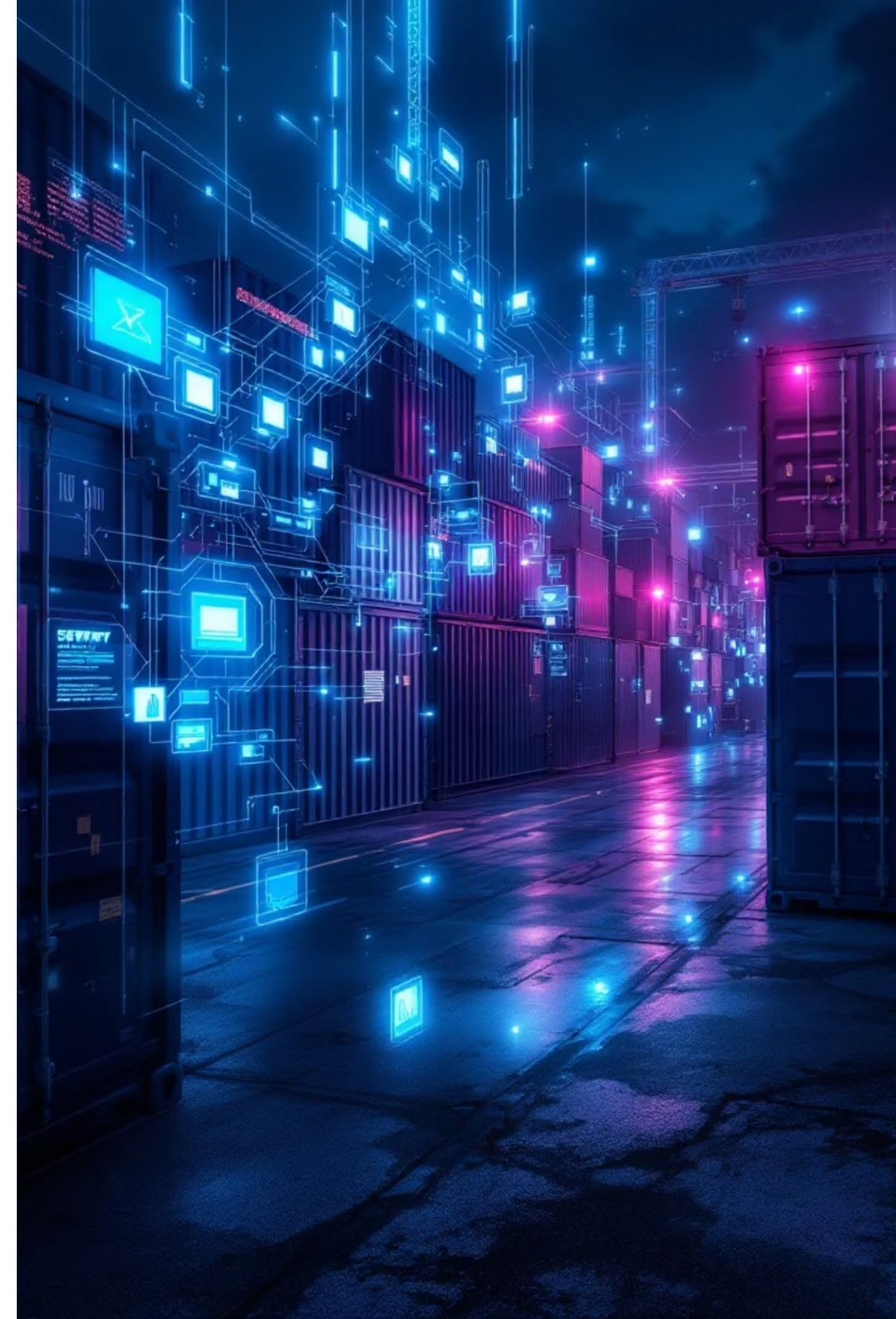
BESS and MDC units are aggressively targeted by organized theft rings at ports and border crossings.

Continuous Asset Protection & Monitoring

The threat of theft persists even after deployment. BESS and MDC units require robust protection throughout their operational lifespan, necessitating redundant security and environmental sensor systems.

Key Vulnerabilities

- **Record-High Theft:** North America faces a dramatic rise in cargo theft, as cunning criminal groups zero in on BESS and MDC units during transit.
- **Insufficient Transparency:** The industry lacks precise, real-time visibility despite advancements in tracking technology.
- **Environmental Hazards:** BESS and MDC units must be protected from environmental threats both during transit and when deployed. Undetected hazards like overheating, toxic gases, and water intrusion can lead to catastrophic failures and significant losses for operators.



How Bloodhound Solves the Problem

1

Enhanced Security

Bloodhound offers real-time monitoring of critical events (door openings, shock, tampering). Multi-image capture and instant alerts enable rapid response, effectively deterring theft. Full security in transit and at deployment

2

Unparalleled Asset Visibility

Bloodhound's redundant communication (cellular, DTN Mesh) forms a self-healing, global tracking network. This ensures unparalleled, end-to-end asset visibility, anywhere.

3

Environmental Monitoring

The Bloodhound platform tracks vital environmental factors (temperature, humidity, CO2, VOCs). It instantly flags anomalies and delivers automated alerts, preventing catastrophic failures and losses.



Bloodhound's Unique Capabilities are Perfect for Protecting your Assets

Functionality & Reliability

- **Discreet & Secure Design:** Engineered for covert tracking, BTDs are challenging to detect or disable.
- **Triple-Redundant Connectivity:** Access seamless tracking through cellular, LoRa mesh, and SATCOM for uninterrupted coverage.
- **Reliable Data Persistence:** Onboard storage ensures data availability, even during communication outages.

Advanced Sensor Suite

- **Comprehensive Environmental Monitoring:** Track critical parameters like door status, tampering, shock, temperature, CO₂, and methane.
- **Smart Image Capture:** BTD supports configurable photo bursts triggered automatically during door openings or breach events.

Remote Control & Updates

- **Customizable Reporting:** Adjust reporting frequency from real-time to daily, with configurable sensor thresholds.
- **Dynamic Remote Commands:** Remotely trigger camera functions, manage device settings, and modify reporting frequencies.
- **Effortless Over-the-Air (OTA) Updates:** Seamlessly add new features and enhance functionality, eliminating the need for hardware replacement.

Bloodhound vs. Traditional Trackers: A Clear Advantage

The Bloodhound Tracking Device (BTD) offers a comprehensive suite of features that significantly outperforms traditional tracking solutions, providing unparalleled reliability, advanced monitoring capabilities, and a future-proof design.

| Feature | Bloodhound Advantage | Traditional Trackers |
|-----------------------|-------------------------------------|------------------------------|
| Coverage – Cellular | ✔ Standard | ✔ Standard |
| Coverage – SATCOM | ✔ Standard | ✗ Limited (5/13 competitors) |
| Coverage – IoT Mesh | ✔ Built-in DTN Mesh | ✗ No mesh support |
| Coverage – GPS | ✔ Standard | ✔ Standard |
| OTA Updates | ✔ Remote, user-initiated | ✗ Limited (3/13 competitors) |
| Environmental Sensors | ✔ Temperature & Humidity | ✗ Only in 2/13 competitors |
| Chemical Sensors | ✔ CO ₂ & Methane | ✗ Only in 2/13 competitors |
| Security Sensors | ✔ Shock & Tamper | ✗ Only in 4/13 competitors |
| Cameras | ✔ Event-triggered images | ✗ Not available |
| Future-Proofing | ✔ Fentanyl sensor on roadmap (2026) | ✗ Not available |
| Customer Support | ✔ 24/7 Operations Center | ✗ No dedicated equivalent |

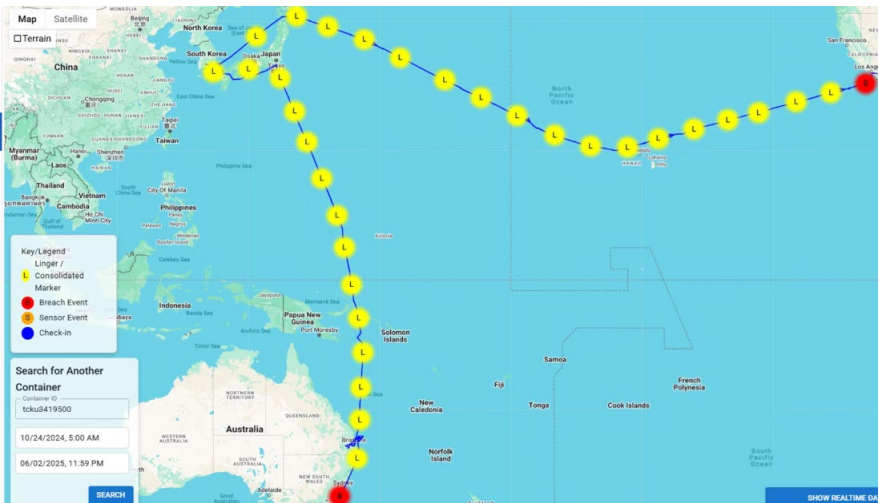
Over 174,000 miles of Ocean and Truck Trials to date! 98.3% Communications Success Rate

Field Trial Insights



Identity Verified

Our advanced imaging and data streams quickly identify individuals involved in unauthorized access attempts, ensuring rapid response.



Precise Location

Bloodhound’s triple-redundant system delivers precise location data for every unscheduled stop or door event. With over 174,000 miles of global field trials, our system delivers an industry-leading 98.3% communication reliability worldwide.

| | | |
|------------------------------|------------------------------|----------------------------|
| Container Number TF553045 | Location Ping 4 hours ago | Sensor Ping 4 hours ago |
| Temperature 135.59 °F | Humidity 16.86% | CO2eq 494.12 ppm |
| VOC 0.51 ppm | IAQ 50.98 | Light 0.01 lx |
| IU Battery 89.02% | CU Battery 86.27% | |

Comprehensive Event Recording

Sensors instantly detected door breaches, sudden movements, and temperature changes, creating a comprehensive record of each incident. Any out of sensor readings or breach events are pushed to our included Dashboard or API’d to Customers own TMS system.



Unlocking Value: Benefits for Every User

1

Reduced Downtime

Bloodhound's sensor suite ensures rapid, proactive incident response, significantly minimizing disruptions and guaranteeing continuous operations. BESS and MDC cannot have enough redundancy in sensors

2

Enhanced Sustainability

Optimize asset utilization and reduce environmental impact, directly contributing to your Uptime objectives.

3

Seamless Integration

Bloodhound integrates effortlessly with your existing systems and workflows, ensuring a smooth transition and boosting overall operational efficiency.

4

24/7 Customer Support

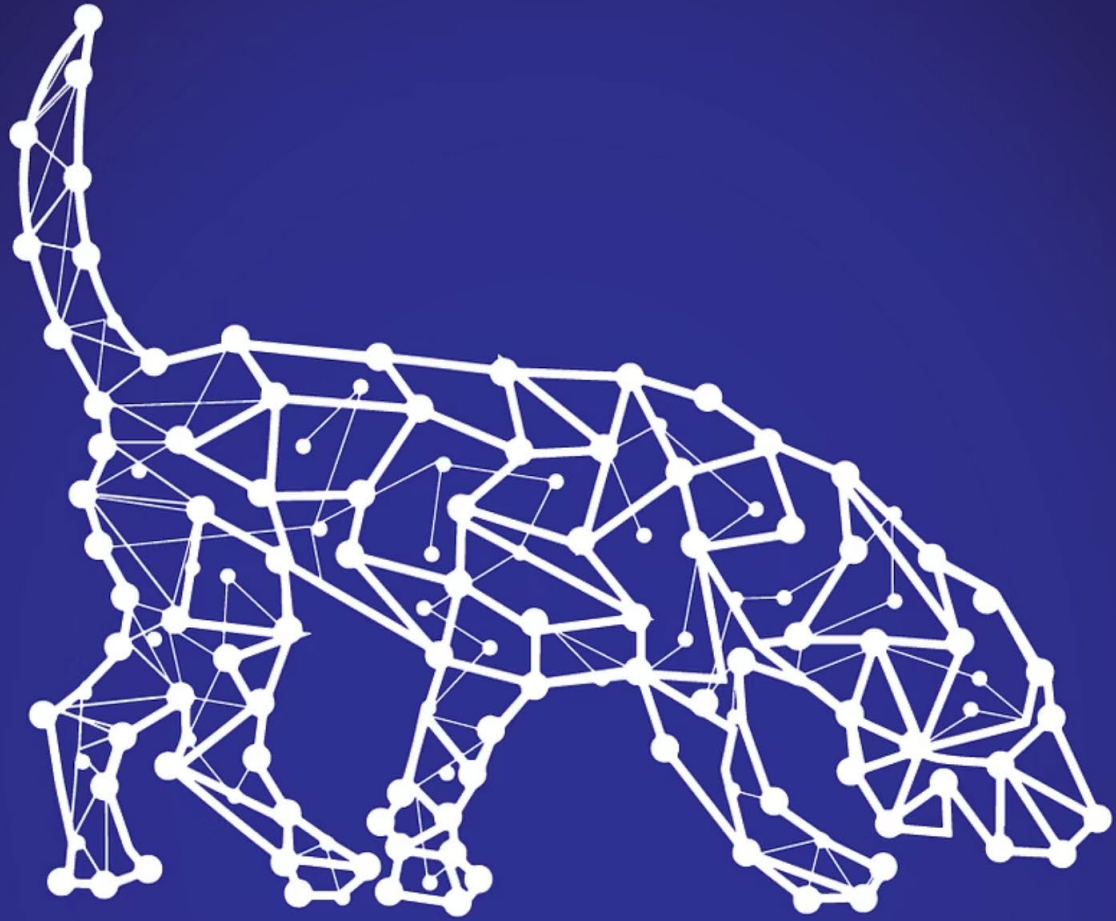
Our dedicated, USA-based Operations Center provides unwavering, multilingual assistance around the clock, ensuring constant support.

Bloodhound empowers every partner in the supply chain with unparalleled visibility, security, and efficiency; truly transforming logistics and security.

BTD Hardware: Engineered for Excellence



- **Robust & Reliable:** IP67-rated, performs from -20°C to +60°C, built for harsh maritime environments.
- **Uninterrupted Connectivity:** Global LTE-M network, Iridium SatCom for consistent coverage.
- **Intelligent Tracking Modes:** Smart, configurable tracking profiles for diverse needs.
- **Real-time Security & Monitoring:** Immediate alerts for critical events, door breaches with camera, impact detection up to $\pm 16G$, and power usage tracking.
- **Rapid Deployment:** Effortless magnetic installation in under 5 minutes, with no tools or drilling required.
- **Fits Any Transportation Model:** BTD Units work if placed inside a container-sized BESS or is used in a container holding your BESS Products. Either way, you are assured of security and accurate tracking during shipping and beyond.



BLOODHOUND
TRACKING DEVICE, INC.

Ready to Protect your most valuable assets?

Discover how Bloodhound can eliminate theft, enhance visibility, and provide redundant sensing for your Asset.

Curtis Spencer, CEO

curtis.spencer@btdtracker.com

[281-332-1795](tel:281-332-1795)

Learn More

Visit our website for in-depth information about our technology and solutions.

www.btdtracker.com

More technical data on how DTN works is available after NDA.