

**BLOODHOUND**  
TRACKING DEVICE, INC.

# Revolutionizing Supply Chain Security and Visibility

Bloodhound is a cutting-edge solution designed to provide unparalleled security and real-time visibility across your entire supply chain, ensuring integrity and efficiency from origin to destination. For Freight Forwarders and NVOCC's Bloodhound is a Money Maker Value Added Service!

Explore more about Bloodhound:

- [Visit Our Website](#)
- [Connect on LinkedIn](#)



1

## Who we are

Founded by supply-chain security and space-comms veterans with 100+ years of combined experience, on a mission to eliminate cargo theft and optimize asset utilization

2

## Bloodhound System

An integrated hardware + software solution with a secure cloud backend delivering end-to-end supply-chain security and pinpoint locational intelligence, complete with tamper-proof cargo integrity verification

3

## Visibility as a Service (VaaS)

Industry-leading resilience, sustainability, security, and end-to-end transparency for logistics, shipping, and transportation; all on a low-cost subscription model with NO CAPEX



# What Problems Does Bloodhound Solve?

## 250%

### Theft Growth

Rate of cargo theft growth over 5 years  
(Freightways)

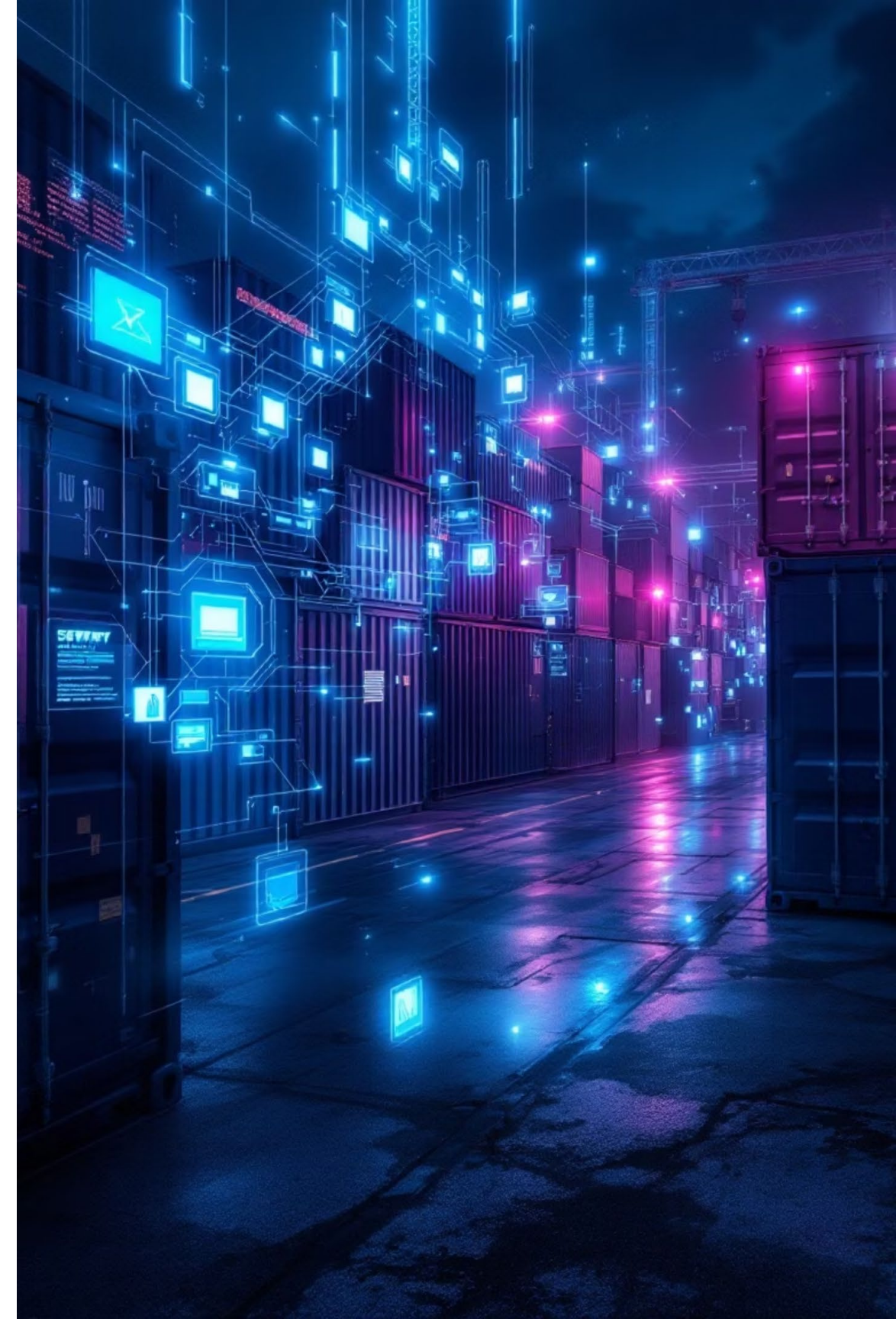
## \$35B

### Annual Loss

Estimated cost of cargo theft per year in the  
U.S. alone

## Critical Areas

- **Record-high cargo theft:** Incidents in North America are the highest they have ever been
- **Insufficient transparency:** Even as tracking technology improves, companies still lack the pinpoint accuracy they demand
- **BCO Satisfaction:** Fewer than 20% of shippers are satisfied with today's tracking services, they need accuracy.
- **Security is Paramount Today:** BCOs want their shipments secure, from loading to ocean to delivery. Bloodhound provides Best-in-Class Security and accuracy. Tracking is not enough anymore.



# How Does Bloodhound Solve The Problem

1

## Cargo theft

BTD employs near-real-time monitoring of environmental anomalies, door openings, shock, and tampering events complete with multi-image capture instantly alerting customers the moment an incident occurs with proof of the breach.

2

## Asset Visibility

BTD's industry-leading triple-redundant comms utilizes SATCOM, cellular networks, and our proprietary DTN Mesh creating a self-healing, global tracking network that provides end to end asset visibility on land and at sea

3

## Asset Utilization

BTD's platform tracks dwelling assets in real time by providing customers with custom thresholds instantly flagging under-used assets and delivering automated alerts to their user. Detention and Demurrage "proof" now exists.

# Bloodhound's Unique Capabilities – Creating the Smart Container

## Functionality & Reliability

- **Discreet & Secure Design:** Engineered for covert tracking, BTDs are challenging to detect or disable.
- **Triple-Redundant Connectivity:** Access seamless tracking through cellular, LoRa mesh, and SATCOM for uninterrupted coverage.
- **Reliable Data Persistence:** Onboard storage ensures data availability, even during communication outages.

## Advanced Sensor Suite

- **Comprehensive Environmental Monitoring:** Track critical parameters like door status, tampering, shock, temperature, CO<sub>2</sub>, and methane.
- **Smart Image Capture:** BTD supports configurable photo bursts triggered automatically during door openings or breach events
- **Included Dwell Meter:** Customizable by the user, keeps dwell information accurate and immediately available to prove detention/demurrage issues accurately.

## Remote Control & Updates

- **Customizable Reporting:** Adjust reporting frequency from real-time to daily, with configurable sensor thresholds.
- **Dynamic Remote Commands:** Remotely trigger camera functions, manage device settings, and modify reporting frequencies.
- **Effortless Over-the-Air (OTA) Updates:** Seamlessly add new features and enhance functionality, eliminating the need for hardware replacement.

# Bloodhound vs. Traditional Trackers: A Clear Advantage

The Bloodhound Tracking Device (BTD) offers a comprehensive suite of features that significantly outperforms traditional tracking solutions, providing unparalleled reliability, advanced monitoring capabilities, and a future-proof design.

Feature	Bloodhound Advantage	Traditional Trackers
Coverage – Cellular	✔ Standard	✔ Standard
Coverage – SATCOM	✔ Standard	✗ Limited (5/13 competitors)
Coverage – IoT Mesh	✔ Built-in DTN Mesh	✗ No mesh support
Coverage – GPS	✔ Standard	✔ Standard
OTA Updates	✔ Remote, user-initiated	✗ Limited (3/13 competitors)
Environmental Sensors	✔ Temperature & Humidity	✗ Only in 2/13 competitors
Chemical Sensors	✔ CO <sub>2</sub> & Methane	✗ Only in 2/13 competitors
Security Sensors	✔ Shock & Tamper	✗ Only in 4/13 competitors
Cameras	✔ Event-triggered images	✗ Not available
Future-Proofing	✔ Fentanyl sensor on roadmap (2026)	✗ Not available
Customer Support	✔ 24/7 Operations Center	✗ No dedicated equivalent

Over 174,000 miles of Ocean and Truck Trials to date! 98.3% Communications Success Rate





# Why Freight Forwarders Need Bloodhound

Freight forwarders navigate complex challenges: fragmented tracking, rampant in-transit cargo theft, and escalating regulatory demands. Bloodhound offers precise solutions engineered to tackle these critical issues directly.

- ❑ Bloodhound empowers freight forwarders with superior security, unmatched visibility, and simplified compliance.

## Eliminate Visibility Gaps

Many forwarders face fragmented tracking, leading to blind spots and missed ETAs. Bloodhound provides end-to-end, real-time global visibility across all transport modes, effectively closing these gaps.

## Mitigate In-Transit Cargo Theft

Forwarders bear significant liability for shipment breaches. Our device detects environmental anomalies, door openings, shock, and tampering events, instantly alerting stakeholders the moment an incident occurs.

## Provides a True Value-Added Service

Shippers have openly agreed to up to \$50 per shipment for superior visibility and Security (JOC). Bloodhound gives that security within the entire supply chain for high value cargo shippers.

## Leverage Authentic Real-time Data

Every update comes directly from the Bloodhound unit, never AIS or third-party feeds, guaranteeing verified, trustworthy data in the UI every time.



# Transformative Benefits for Freight Forwarders



## Reduced Liability for Cargo Loss/Damage

Gain irrefutable proof of cargo condition, location, and custody with detailed logs and sensor data, accelerating claims.



## Flexible 'Closed-Loop' Model

Our 'Closed-Loop' model allows easy installation and removal for high-value cargo, enabling premium, value-added services. Perfect for an NVO or FF controlling all levels of the shipment.



## Premium Visibility Services (Upsell)

Offer a 'BTD-tagged' service for high-value shipments, turning tracking into a revenue stream and boosting margins.



## Customs & Compliance Made Easier

Automated geofencing and real-time alerts reduce regulatory delays, simplify documentation, and streamline audits.



## Reduced Support Burden

Eliminate "Where's my shipment?" calls by sharing live dashboards or API feeds with clients, significantly lowering overhead.



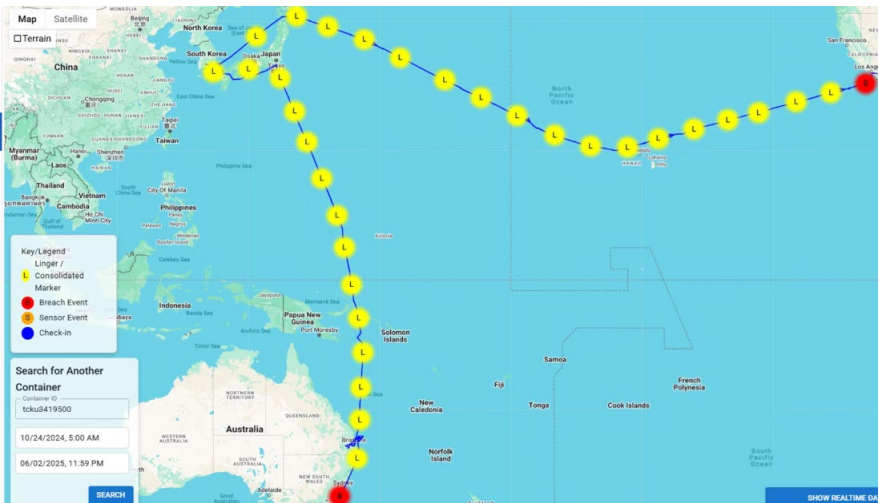


# Field Trial Insights



## Identity Verified

Our advanced imaging and data streams quickly identify individuals involved in unauthorized access attempts, ensuring rapid response.



## Precise Location

Bloodhound’s triple-redundant system delivers precise location data for every unscheduled stop or door event. With over 174,000 miles of global field trials, our system delivers an industry-leading 98.3% communication reliability worldwide.

Container Number TFS53045	Location Ping 4 hours ago	Sensor Ping 4 hours ago
Temperature 135.59 °F	Humidity 16.86%	CO2eq 494.12 ppm
VOC 0.51 ppm	IAQ 50.98	Light 0.01 lx
IU Battery 89.02%	CU Battery 86.27%	

## Comprehensive Event Recording

Sensors instantly detected door breaches, sudden movements, and temperature changes, creating a comprehensive record of each incident. Any out of sensor readings or breach events are pushed to the API.

# BTD Installation: Installed in Minutes. Trusted for Years.



## Modular Two-Part System

- Communication Unit (A): Mounted between the container corrugation with integrated solar designed to blend in.
- Instrumentation Unit (B): Mounted inside the trailer roof protected, tamper-resistant, and out of harm's way.



## Guided & Efficient Setup

- Done in **under 5 minutes** using secure magnetic mounts.
- Units auto-initialize and confirm readiness through onboard indicators.
- A dedicated installation app walks installers step by step from placement to activation.



## Self-Powered & Wire-Free

- Fully self-contained with onboard batteries.
- No wiring, no tie-in to trailer systems.
- Battery tested to over 3.5 years of continual service. BTD swaps out batteries as part of the Service Agreement, including maintenance, warranty, battery, monitoring.



## Scalable Fleet Deployment

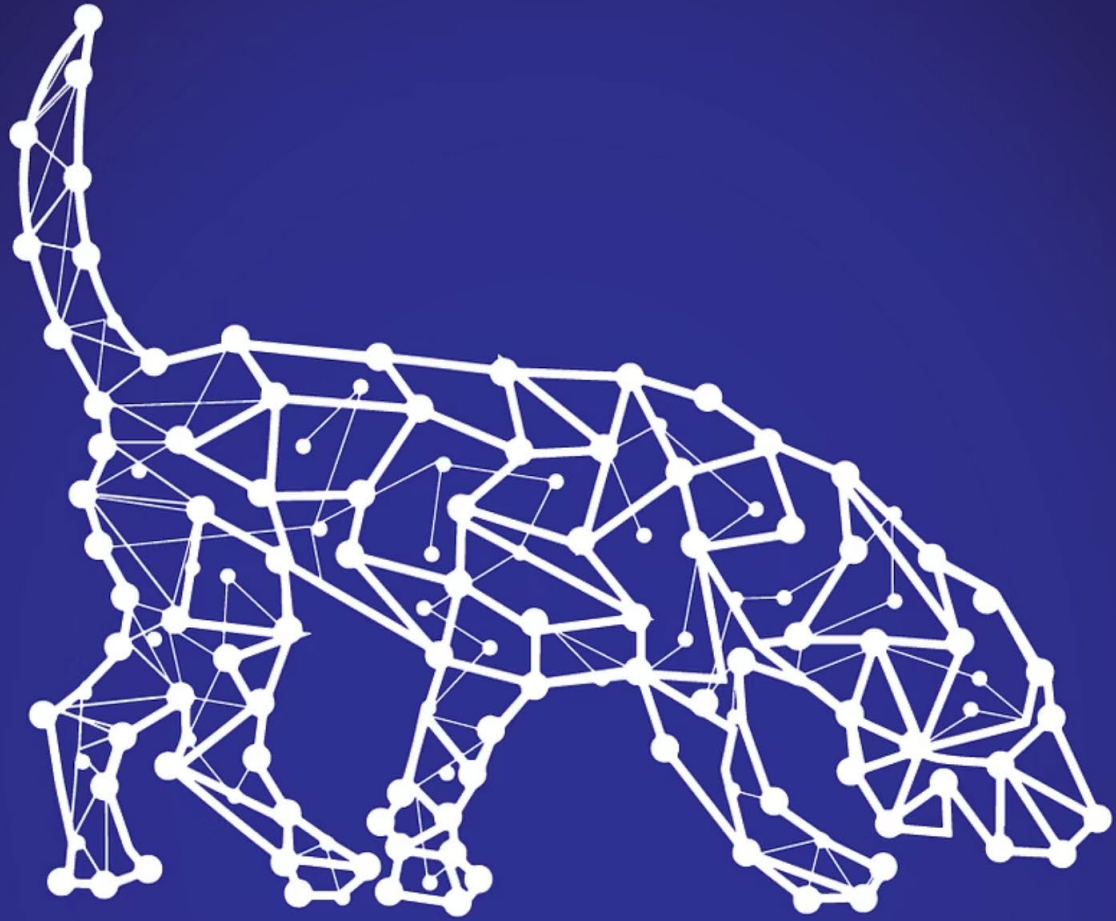
- Requires no technical expertise or specialized tools.
- BTD trained with ILA in early trials to make sure deployment would be easy and fast.
- **24/7 Operations Center** available to support any questions, issues, or concerns.



# BTD Hardware: Engineered for Excellence



- **Robust & Reliable:** IP67-rated, performs from -20°C to +60°C, built for harsh maritime environments.
- **Uninterrupted Connectivity:** Global LTE-M network, Iridium SatCom for consistent coverage.
- **Intelligent Tracking Modes:** Smart, configurable tracking profiles for diverse needs.
- **Real-time Security & Monitoring:** Immediate alerts for critical events, door breaches with camera, impact detection up to  $\pm 16G$ , and power usage tracking.
- **Rapid Deployment:** Effortless magnetic installation in under 5 minutes.



**BLOODHOUND**  
TRACKING DEVICE, INC.

# Ready to Revolutionize Your Supply Chain?

Discover how Bloodhound can eliminate theft, enhance visibility, and optimize asset utilization for your business.

**Curtis Spencer, CEO**

[curtis.spencer@btdtracker.com](mailto:curtis.spencer@btdtracker.com)

[281-332-1795](tel:281-332-1795)

## Learn More

Visit our website for in-depth information about our technology and solutions.

[www.btdtracker.com](http://www.btdtracker.com)

More technical data on how DTN works is available after NDA.