

BLOODHOUND
TRACKING DEVICE, INC.

Revolutionizing Supply Chain Security and Visibility

Bloodhound is a cutting-edge solution designed to provide unparalleled security and real-time visibility across your entire supply chain, ensuring integrity and efficiency from origin to destination. FULL FLEET SMART BOX IS AVAILABLE NOW!

Explore more about Bloodhound:

- [Visit Our Website](#)
- [Connect on LinkedIn](#)



1

Who we are

Founded by supply-chain security and space-communication veterans with 100+ years of combined experience, on a mission to eliminate cargo theft and optimize asset utilization

2

Bloodhound System

An integrated hardware + software solution with a secure cloud backend delivering end-to-end supply-chain security and pinpoint locational intelligence, complete with tamper-proof cargo integrity verification

3

Visibility as a Service (VaaS)

Industry-leading resilience, sustainability, security, and end-to-end transparency for logistics, shipping, and transportation; all on a low-cost subscription model with NO CAPEX

What Problems Does Bloodhound Solve?

250%

Theft Growth

Rate of cargo theft growth over 5 years
(Freightways)

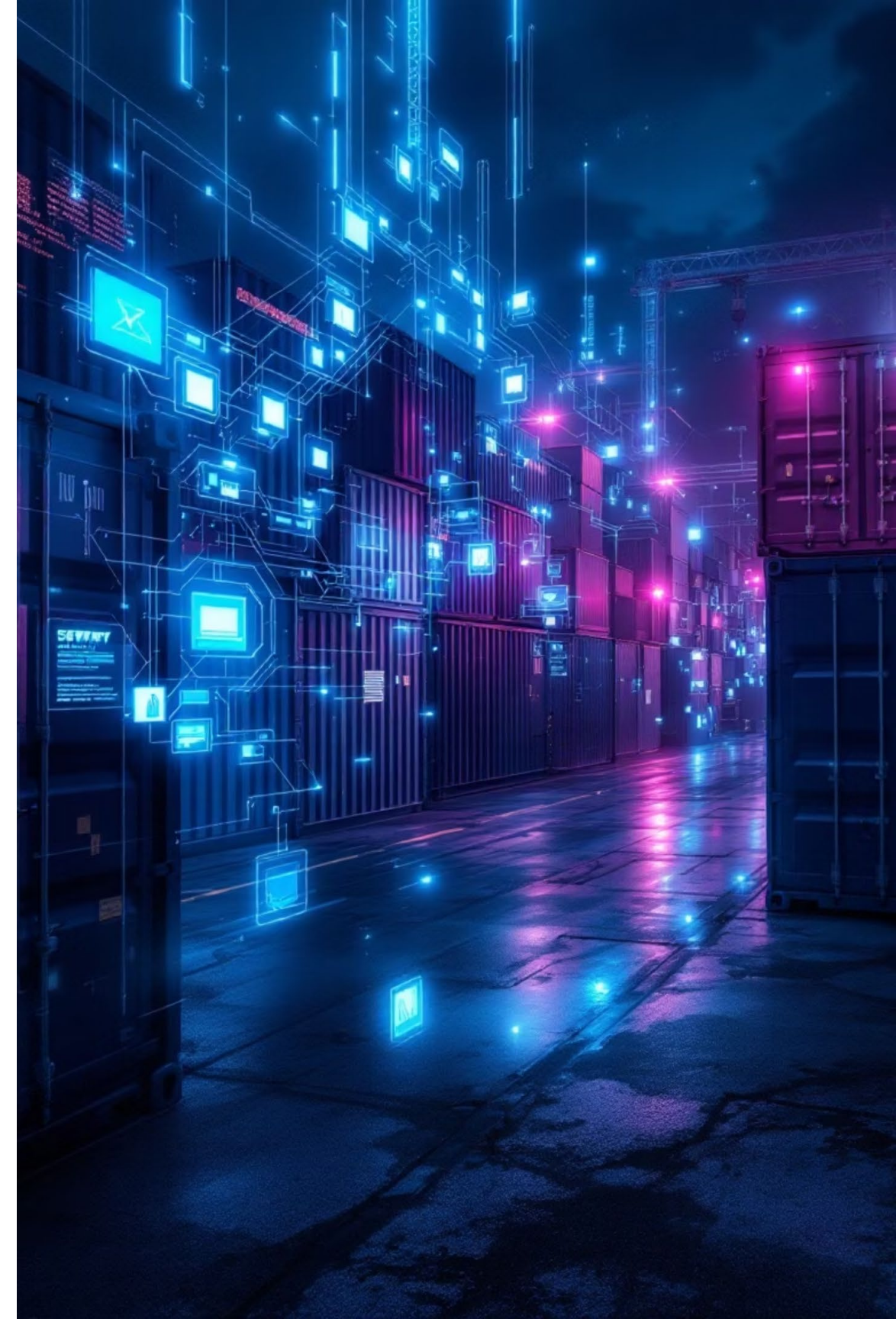
\$35B

Annual Loss

Estimated cost of cargo theft per year in the
U.S. alone

Critical Areas

- **Record-high cargo theft:** Incidents in North America are the highest they have ever been
- **Insufficient transparency:** Even as tracking technology improves, companies still lack the pinpoint accuracy they demand
- **BCO Satisfaction:** Fewer than 20% of shippers are satisfied with today's tracking services, they need accuracy.
- **Asset Utilization:** Empty location validation is lacking, leaving blind-spots that force fleets to carry excess idle equipment



How Does Bloodhound Solve The Problem

1

Cargo theft

BTD employs near-real-time monitoring of environmental anomalies, door openings, shock, and tampering events complete with multi-image capture instantly alerting customers the moment an incident occurs

2

Asset Visibility

BTD's industry-leading triple-redundant comms utilizes SATCOM, cellular networks, and our proprietary DTN Mesh creating a self-healing, global tracking network that provides end to end asset visibility on land and at sea

3

Asset Utilization

BTD's platform tracks dwelling assets in real time by providing customers with custom thresholds instantly flagging under-used assets and delivering automated alerts to their user. Most importantly, detention/demurrage issues now have proof for the Carrier!

Bloodhound's Unique Capabilities – Creating the Smart Container

Functionality & Reliability

- **Discreet & Secure Design:** Engineered for covert tracking, BTDs are challenging to detect or disable.
- **Triple-Redundant Connectivity:** Access seamless tracking through cellular, LoRa mesh, and SATCOM for uninterrupted coverage.
- **Reliable Data Persistence:** Onboard storage ensures data availability, even during communication outages.

Advanced Sensor Suite

- **Comprehensive Environmental Monitoring:** Track critical parameters like door status, tampering, shock, temperature, CO₂, and methane.
- **Smart Image Capture:** BTD supports configurable photo bursts triggered automatically during door openings or breach events
- **Included Dwell Meter:** Customizable by the user, keeps dwell information accurate and immediately available to prove detention/demurrage issues accurately.

Remote Control & Updates

- **Customizable Reporting:** Adjust reporting frequency from real-time to daily, with configurable sensor thresholds.
- **Dynamic Remote Commands:** Remotely trigger camera functions, manage device settings, and modify reporting frequencies.
- **Effortless Over-the-Air (OTA) Updates:** Seamlessly add new features and enhance functionality, eliminating the need for hardware replacement.

Bloodhound vs. Traditional Trackers: A Clear Advantage

The Bloodhound Tracking Device (BTD) offers a comprehensive suite of features that significantly outperforms traditional tracking solutions, providing unparalleled reliability, advanced monitoring capabilities, and a future-proof design.

Feature	Bloodhound Advantage	Traditional Trackers
Coverage – Cellular	✔ Standard	✔ Standard
Coverage – SATCOM	✔ Standard	✗ Limited (5/13 competitors)
Coverage – IoT Mesh	✔ Built-in DTN Mesh	✗ No mesh support
Coverage – GPS	✔ Standard	✔ Standard
OTA Updates	✔ Remote, user-initiated	✗ Limited (3/13 competitors)
Environmental Sensors	✔ Temperature & Humidity	✗ Only in 2/13 competitors
Chemical Sensors	✔ CO ₂ & Methane	✗ Only in 2/13 competitors
Security Sensors	✔ Shock & Tamper	✗ Only in 4/13 competitors
Cameras	✔ Event-triggered images	✗ Not available
Future-Proofing	✔ Fentanyl sensor on roadmap (2026)	✗ Not available
Customer Support	✔ 24/7 Operations Center	✗ No dedicated equivalent

Over 174,000 miles of Ocean and Truck Trials to date! 98.3% Communications Success Rate



Why Ocean Carriers Need Bloodhound

Ocean carriers face complex global visibility, cargo protection, and regulatory hurdles. Bloodhound offers precise solutions to overcome these challenges effectively.

- ❑ Bloodhound empowers ocean carriers, delivering **superior security, unmatched visibility, and simplified compliance.**

Ensure Uninterrupted Global Visibility

Bloodhound provides continuous, real-time, end-to-end container visibility across oceans and all transit points, eliminating traditional blind spots at sea.

Fortify Cargo Security Against Theft

Bloodhound detects environmental anomalies, door openings, shock, and tampering. Instant alerts minimize losses and enable proactive responses to rising cargo theft risks.

Simplify Internal Tracking Processes

Bloodhound's Tracking Back-End Data Base connects directly to the Carriers TMS via API, allowing accurate real-time data inside your current Dashboard. Lowers the manual labor for the Carrier.

Leverage Authentic Real-time Data

Every update comes directly from the Bloodhound unit, never AIS or third-party feeds, guaranteeing verified, trustworthy data in the UI every time.

Transformative Benefits for Ocean Carriers



Enhanced Cargo Protection & Liability Mitigation

Provides irrefutable proof of cargo condition and location, accelerating claims and reducing carrier liability.



Optimized Asset Utilization with our accurate Dwell Meter

Dwell times can be set by the Carrier for alerts, and accurate locational intel eliminates detention and demurrage counter-claims.



New Revenue Streams from Premium Security + Tracking

Offer 'BTD-protected' services for all customers, especially high-value cargo, boosting margins by turning advanced tracking into a value-added service. BTD's Subscription Model allows Carriers to up-charge for Security



Streamlined Port Operations & Compliance

Automated location and real-time alerts reduce regulatory and congestion delays at ports, simplifying Terminal Operations.



Reduced Operational Support Burden

Eliminate "Where's my container?" inquiries by sharing live tracking dashboards, lowering customer service FTE's and improving satisfaction.

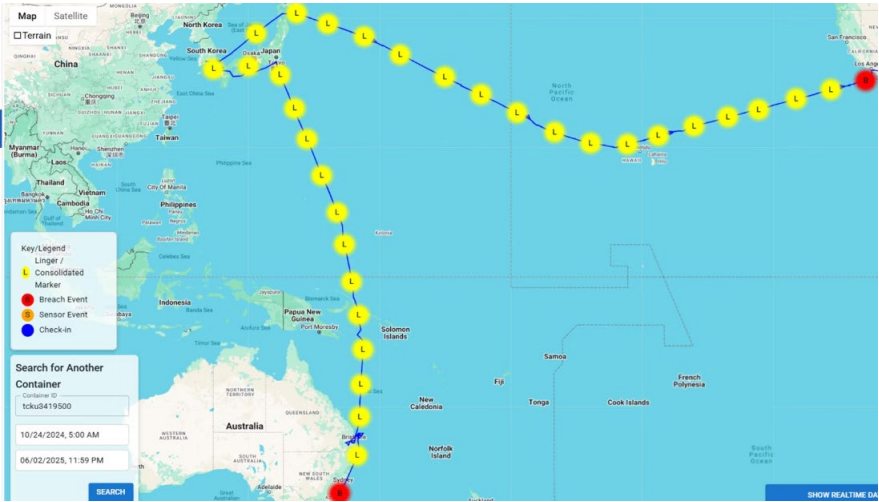


Field Trial Insights



Identity Verified

Our advanced imaging and data streams quickly identify individuals involved in unauthorized access attempts, ensuring rapid response.



Precise Location

Bloodhound’s triple-redundant system delivers precise location data for every unscheduled stop or door event. With over 174,000 miles of global field trials, our system delivers an industry-leading 98.3% communication reliability worldwide.

Container Number TFS53045	Location Ping 4 hours ago	Sensor Ping 4 hours ago
Temperature 135.59 °F	Humidity 16.86%	CO2eq 494.12 ppm
VOC 0.51 ppm	IAQ 50.98	Light 0.01 lx
IU Battery 89.02%	CU Battery 86.27%	

Comprehensive Event Recording

Sensors instantly detected door breaches, sudden movements, and temperature changes, creating a comprehensive record of each incident. Any out of sensor readings or breach events are pushed to the API.

BTD Installation: Installed in Minutes. Trusted for Years.



Modular Two-Part System

- Communication Unit (A): Mounted between the container corrugation with integrated solar designed to blend in.
- Instrumentation Unit (B): Mounted inside the trailer roof protected, tamper-resistant, and out of harm's way.



Guided & Efficient Setup

- Done in **under 5 minutes** using secure magnetic mounts.
- Units auto-initialize and confirm readiness through onboard indicators.
- A dedicated installation app walks installers step by step from placement to activation.



Self-Powered & Wire-Free

- Fully self-contained with onboard batteries.
- No wiring, no tie-in to trailer systems.
- Battery tested to over 3.5 years of continual service. BTD swaps out batteries as part of the Service Agreement, including maintenance, warranty, battery, monitoring.



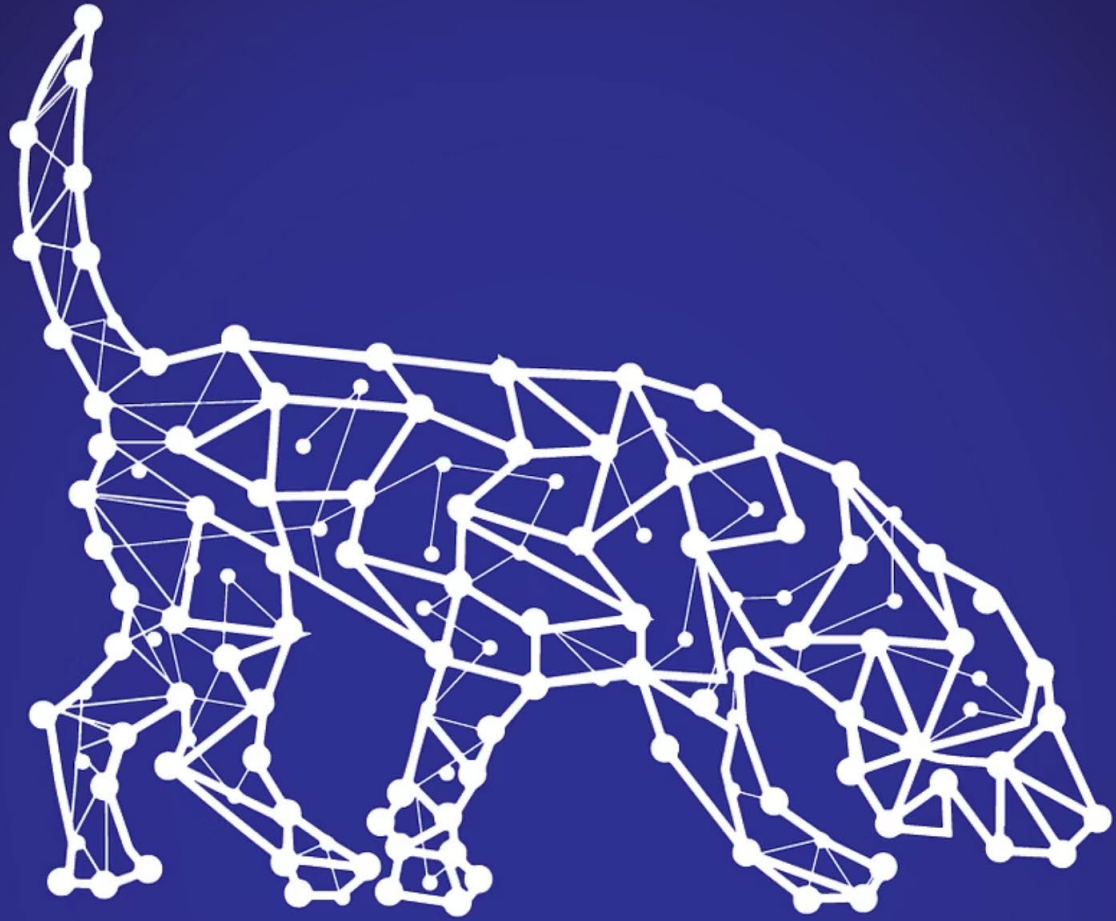
Scalable Fleet Deployment

- Requires no technical expertise or specialized tools.
- BTD trained with ILA in early trials to make sure deployment would be easy and fast.
- **24/7 Operations Center** available to support any questions, issues, or concerns.

BTD Hardware: Engineered for Excellence



- **Robust & Reliable:** IP67-rated, performs from -20°C to +60°C, built for harsh maritime environments.
- **Uninterrupted Connectivity:** Global LTE-M network, Iridium SatCom for consistent coverage.
- **Intelligent Tracking Modes:** Smart, configurable tracking profiles for diverse needs.
- **Real-time Security & Monitoring:** Immediate alerts for critical events, door breaches with camera, impact detection up to $\pm 16G$, and power usage tracking.
- **Rapid Deployment:** Effortless magnetic installation in under 5 minutes.



BLOODHOUND
TRACKING DEVICE, INC.

Ready to Revolutionize Your Supply Chain?

Discover how Bloodhound can eliminate theft, enhance visibility, and optimize asset utilization for your business.

Curtis Spencer, CEO

curtis.spencer@btdtracker.com

[281-332-1795](tel:281-332-1795)

Learn More

Visit our website for in-depth information about our technology and solutions.

www.btdtracker.com

More technical data on how DTN works is available after NDA.