

**BLOODHOUND**  
TRACKING DEVICE, INC.

# Revolutionizing Supply Chain Security and Visibility

Bloodhound is a cutting-edge solution designed to provide unparalleled security and real-time visibility across your entire supply chain, ensuring integrity and efficiency from origin to destination.

Explore more about Bloodhound:

- [Visit Our Website](#)
- [Connect on LinkedIn](#)



1

## Who we are

Founded by supply-chain security and space-comms veterans with 100+ years of combined experience, on a mission to eliminate cargo theft and optimize asset utilization

2

## Bloodhound System

An integrated hardware + software solution with a secure cloud backend delivering end-to-end supply-chain security and pinpoint locational intelligence, complete with tamper-proof cargo integrity verification

3

## Visibility as a Service (VaaS)

Industry-leading resilience, sustainability, security, and end-to-end transparency for logistics, shipping, and transportation; all on a low-cost subscription model with NO CAPEX



# What Problems Does Bloodhound Solve

## 250%

**Theft Growth**

Rate of cargo theft growth over 5 years  
(Freightways)

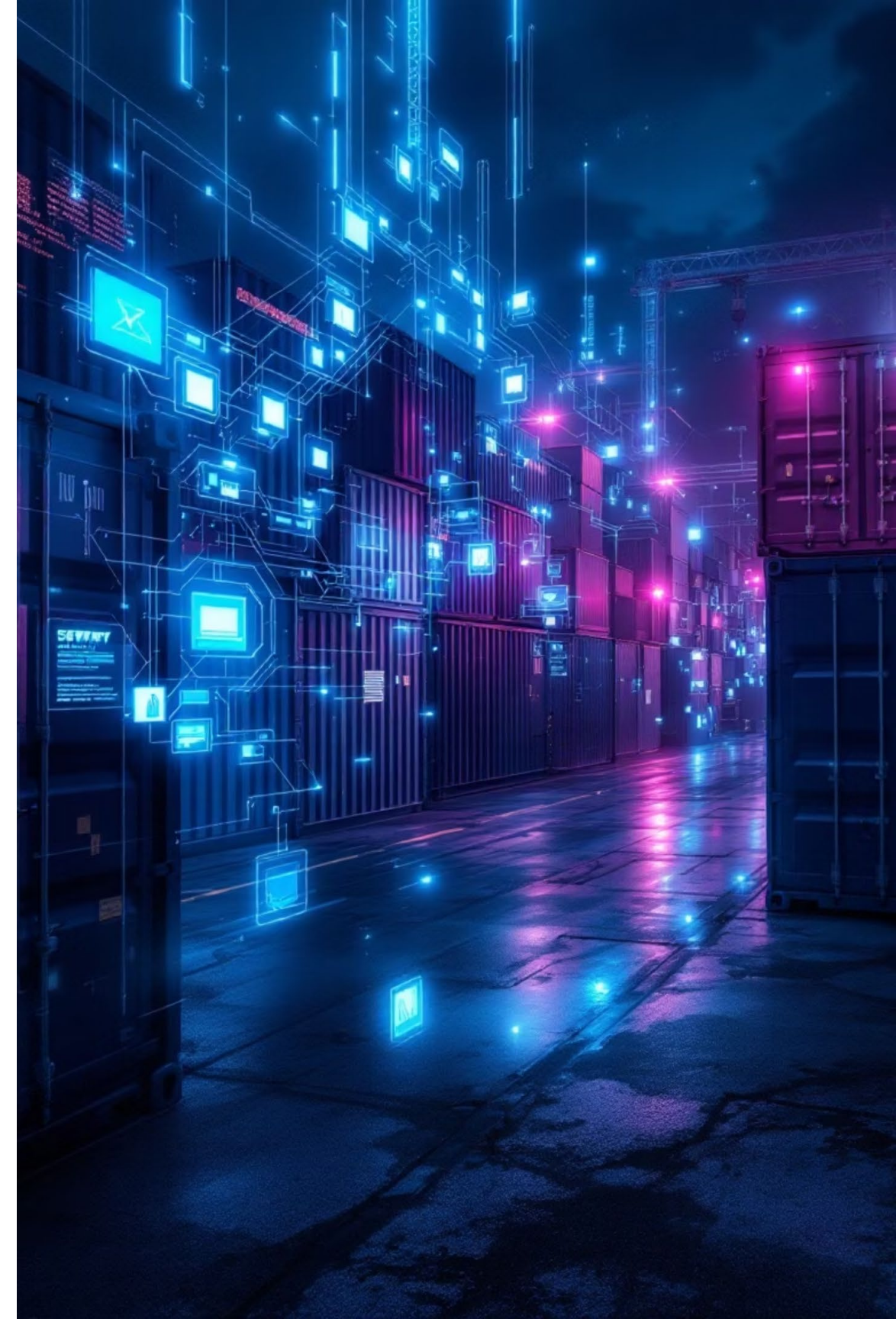
## \$35B

**Annual Loss**

Estimated cost of cargo theft per year  
in the U.S. alone

## Critical Areas

- **Record-high cargo theft:** Incidents in North America are the highest they have ever been
- **Insufficient transparency:** Even as tracking technology improves, shippers and BCOs still lack the pinpoint accuracy they demand (JOC)
- **Asset Utilization:** Fewer than 20% of companies are satisfied with today's tracking, leaving blind-spots that force fleets to carry excess idle equipment (WSJ)



# How Does Bloodhound Solve The Problem

1

## Cargo theft

BTD employs near-real-time monitoring of environmental anomalies, door openings, shock, and tampering events complete with multi-image capture instantly alerting customers the moment an incident occurs

2

## Asset Visibility

BTD's industry-leading triple-redundant comms utilizes SATCOM, cellular networks, and our proprietary DTN Mesh creating a self-healing, global tracking network that provides end to end asset visibility on land and at sea

3

## Asset Utilization

BTD's platform tracks dwelling assets in real time by providing customers with custom thresholds instantly flagging under-used assets and delivering automated alerts to their user



# Bloodhound's Unique Capabilities

## Functionality & Reliability

- **Discreet & Secure Design:** Engineered for covert tracking, BTDs are challenging to detect or disable.
- **Triple-Redundant Connectivity:** Access seamless tracking through cellular, LoRa mesh, and SATCOM for uninterrupted coverage.
- **Reliable Data Persistence:** Onboard storage ensures data availability, even during communication outages.

## Advanced Sensor Suite

- **Comprehensive Environmental Monitoring:** Track critical parameters like door status, tampering, shock, temperature, CO2, and methane.
- **Smart Image Capture:** BTD supports configurable photo bursts triggered automatically during door openings or breach events
- **Included Dwell Meter:** Customizable by the user, keeps dwell information accurate and immediately available to prove detention/demurrage issues accurately.

## Remote Control & Updates

- **Customizable Reporting:** Adjust reporting frequency from real-time to daily, with configurable sensor thresholds.
- **Dynamic Remote Commands:** Remotely trigger camera functions, manage device settings, and modify reporting frequencies.
- **Effortless Over-the-Air (OTA) Updates:** Seamlessly add new features and enhance functionality, eliminating the need for hardware replacement.

# Bloodhound vs. Traditional Trackers: A Clear Advantage

The Bloodhound Tracking Device (BTD) offers a comprehensive suite of features that significantly outperforms traditional tracking solutions, providing unparalleled reliability, advanced monitoring capabilities, and a future-proof design.

Feature	Bloodhound Advantage	Traditional Trackers
Coverage – Cellular	✔ Standard	✔ Standard
Coverage – SATCOM	✔ Standard	✗ Limited (5/13 competitors)
Coverage – IoT Mesh	✔ Built-in DTN Mesh	✗ No mesh support
Coverage – GPS	✔ Standard	✔ Standard
OTA Updates	✔ Remote, user-initiated	✗ Limited (3/13 competitors)
Environmental Sensors	✔ Temperature & Humidity	✗ Only in 2/13 competitors
Chemical Sensors	✔ CO <sub>2</sub> & Methane	✗ Only in 2/13 competitors
Security Sensors	✔ Shock & Tamper	✗ Only in 4/13 competitors
Cameras	✔ Event-triggered images	✗ Not available
Future-Proofing	✔ Fentanyl sensor on roadmap (2026)	✗ Not available
Customer Support	✔ 24/7 Operations Center	✗ No dedicated equivalent

Over 174,000 miles of Ocean and Truck Trials to date! 98.3% Communications Success Rate





# Why Trucking Companies Need Bloodhound

The trucking industry struggles with theft and inefficient asset utilization. Traditional tracking solutions fall short, lacking the real-time security and reliable visibility needed.

❏ Bloodhound transforms fleet management, enhancing security, visibility, and cost efficiency.

## Unrivalled Security

Our internally mounted device alerts stakeholders of theft and smuggling, providing critical security for the entire vehicle.

## Assured Global Visibility

Bloodhound's triple-redundant communication (SATCOM, cellular, DTN Mesh) ensures reliable, end-to-end global tracking.

## Cost-Effective Operations

Our flexible leasing model enables fleets to install units with zero capital expenditure, requiring only a modest monthly fee.

## Leverage Authentic Real-time Data

Every update comes directly from the Bloodhound unit, never AIS or third-party feeds, guaranteeing verified, trustworthy data in the UI every time.



# Transformative Benefits for Trucking Companies



## Enhanced Cargo Protection & Liability Mitigation

Provides irrefutable proof of cargo condition and location, accelerating claims and reducing carrier liability.



## Optimized Asset Utilization with 'Closed-Loop' Model

Easy installation and removal optimizes asset utilization for flexible deployment on specific trailers or high-risk routes.



## New Revenue Streams from Premium Tracking

Offer 'BTD-protected' services for high-value cargo, boosting margins by turning advanced tracking into a value-added service.



## Streamlined Yard Operations & Compliance

Automated geofencing and real-time alerts reduce regulatory delays at inspection points and depots, simplifying compliance and operations.



## Reduced Operational Support Burden

Eliminate "Where's my trailer?" inquiries by sharing live tracking dashboards, lowering customer service and improving satisfaction.

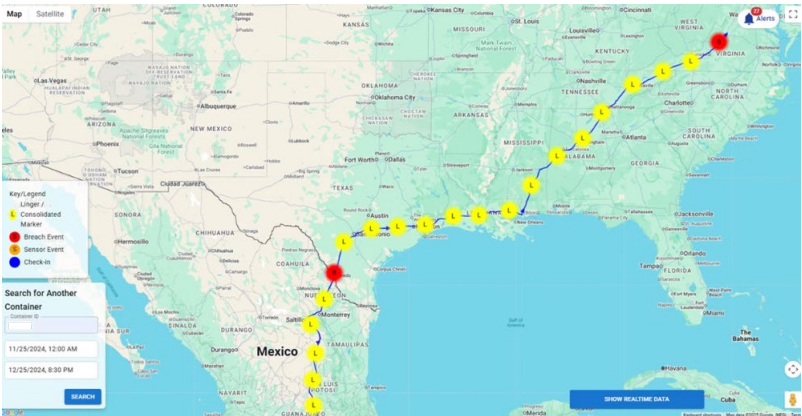


# Field Trial Insights



## Identity Verified

Our advanced imaging and data streams quickly identify individuals involved in unauthorized access attempts, ensuring rapid response.



## Precise Location

Bloodhound’s triple-redundant system delivers precise location data for every unscheduled stop or door event. With 174,000+ miles of global trials, it boasts 98.3% communication reliability worldwide.

Container Number TFS53045	Location Ping 4 hours ago	Sensor Ping 4 hours ago
Temperature ❗ 135.59 °F	Humidity 16.86%	CO2eq ✅ 494.12 ppm
VOC ✅ 0.51 ppm	IAQ ✅ 50.98	Light ✅ 0.01 lx
IU Battery ✅ 89.02%	CU Battery ✅ 86.27%	

## Comprehensive Event Recording

Sensors instantly detected door breaches, sudden movements, and temperature changes, creating a comprehensive record of each incident.



# BTD Installation: Installed in Minutes. Trusted for Years.



## Modular Two-Part System

- Communication Unit (A): Roof-mounted with integrated solar designed to blend in.
- Instrumentation Unit (B): Mounted inside the trailer roof protected, tamper-resistant, and out of harm's way.



## Guided & Efficient Setup

- Done in **under 5 minutes** using secure magnetic mounts.
- Units auto-initialize and confirm readiness through onboard indicators.
- A dedicated installation app walks installers step by step from placement to activation.



## Self-Powered & Wire-Free

- Fully self-contained with onboard batteries.
- No wiring, no tie-in to trailer systems.
- Same quick process for any trailer in the fleet.



## Scalable Fleet Deployment

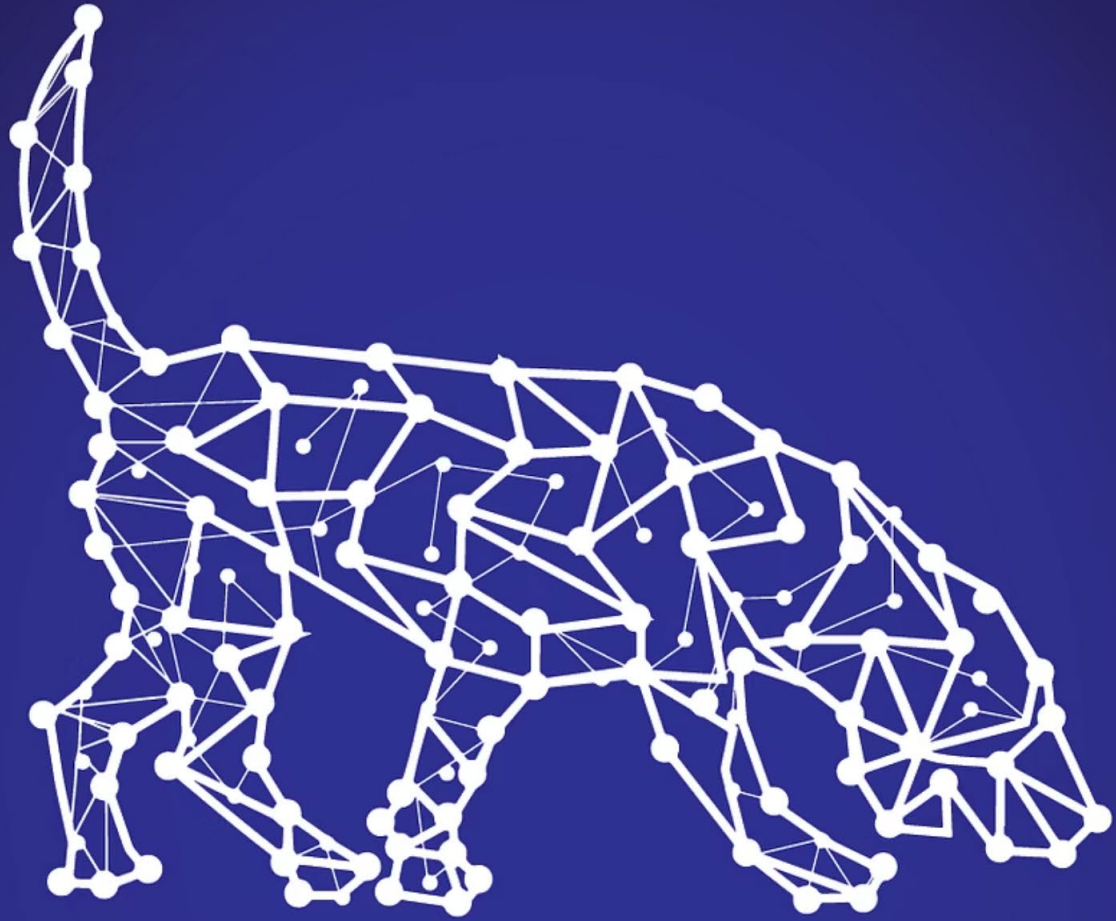
- Requires no technical expertise or specialized tools.
- Easily transferable between trailers, scaling deployment at speed.
- **24/7 Operations Center** available to support any questions, issues, or concerns.

# BTD Hardware: Engineered for Excellence



- **Robust & Reliable:** IP67-rated, performs from -20°C to +60°C, built for harsh maritime environments.
- **Uninterrupted Connectivity:** Global LTE-M network for consistent coverage.
- **Intelligent Tracking Modes:** Smart, configurable tracking profiles for diverse needs.
- **Real-time Security & Monitoring:** Immediate alerts for critical events, impact detection up to  $\pm 16G$ , and power usage tracking.
- **Rapid Deployment:** Effortless magnetic installation in under 5 minutes.





**BLOODHOUND**  
TRACKING DEVICE, INC.

# Ready to Revolutionize Your Supply Chain?

Discover how Bloodhound can eliminate theft, enhance visibility, and optimize asset utilization for your business.

**Curtis Spencer, CEO**

[curtis.spencer@btdtracker.com](mailto:curtis.spencer@btdtracker.com)

[281-332-1795](tel:281-332-1795)

## Learn More

Visit our website for in-depth information about our technology and solutions.

[www.btdtracker.com](http://www.btdtracker.com)

More technical data on how DTN works is available after NDA.